



WORLD  CLASS  
**CARGO**  
SECUREMENT  
KEEPING PEOPLE **SAFE**  
FOR **50** YEARS

**SAFETY IN TRANSPORTERS  
2021**

**WISTRA**  
CARGO CONTROL  
THE HEICO COMPANIES

---

## Deployed all over Europe



### Version july 2021

Subject to technical changes and copyright. Deliveries are exclusively subject to our conditions of sale and delivery. This catalogue is our intellectual property! Re-printing and reproduction - including excerpts - as well as the use of our images, is only permitted with our prior written permission. We assume no warranty for the data, descriptions, representations, notes and recommendations for use of the products available from our company and detailed in this catalogue. In principle, legal claims cannot be made based on this because deployment and use are generally beyond our control. Moreover, users are obliged to check and decide for themselves whether the items offered by our company can be used in individual cases.

WISTRA GmbH

---

# Table of Contents

<b>General</b>	<b>4</b>
<b>Cargo securing for transporters and trailers</b>	<b>12</b>
Airline lashing rails	13
Lashing points	29
Fittings / end fittings and accessories	30
AirlineStop	37
Lashing straps	38
Cargo securing nets	44
Shoring beams	57
Parting wall locks	64
Garment rails	64
Cargo securing wall for transporters	65
<b>Interesting facts</b>	<b>66</b>





---

## Our experience guarantees your safety!

Dear customer,

We are pleased to welcome you with our current catalogue.

On the following pages you will be able to acquaint yourself with WISTRA GmbH.

The individual categories will provide you with an overall impression of the capability of our modern company and of our products and services.

Besides our well-known products, we present the latest product developments and accessories of our product range.

We look forward to working with you and wish you pleasant browsing in our catalogue.

Yours



Mark Zubel



---

### The company

WISTRA offers a wide product range of textile and mechanical aids for cargo securing.

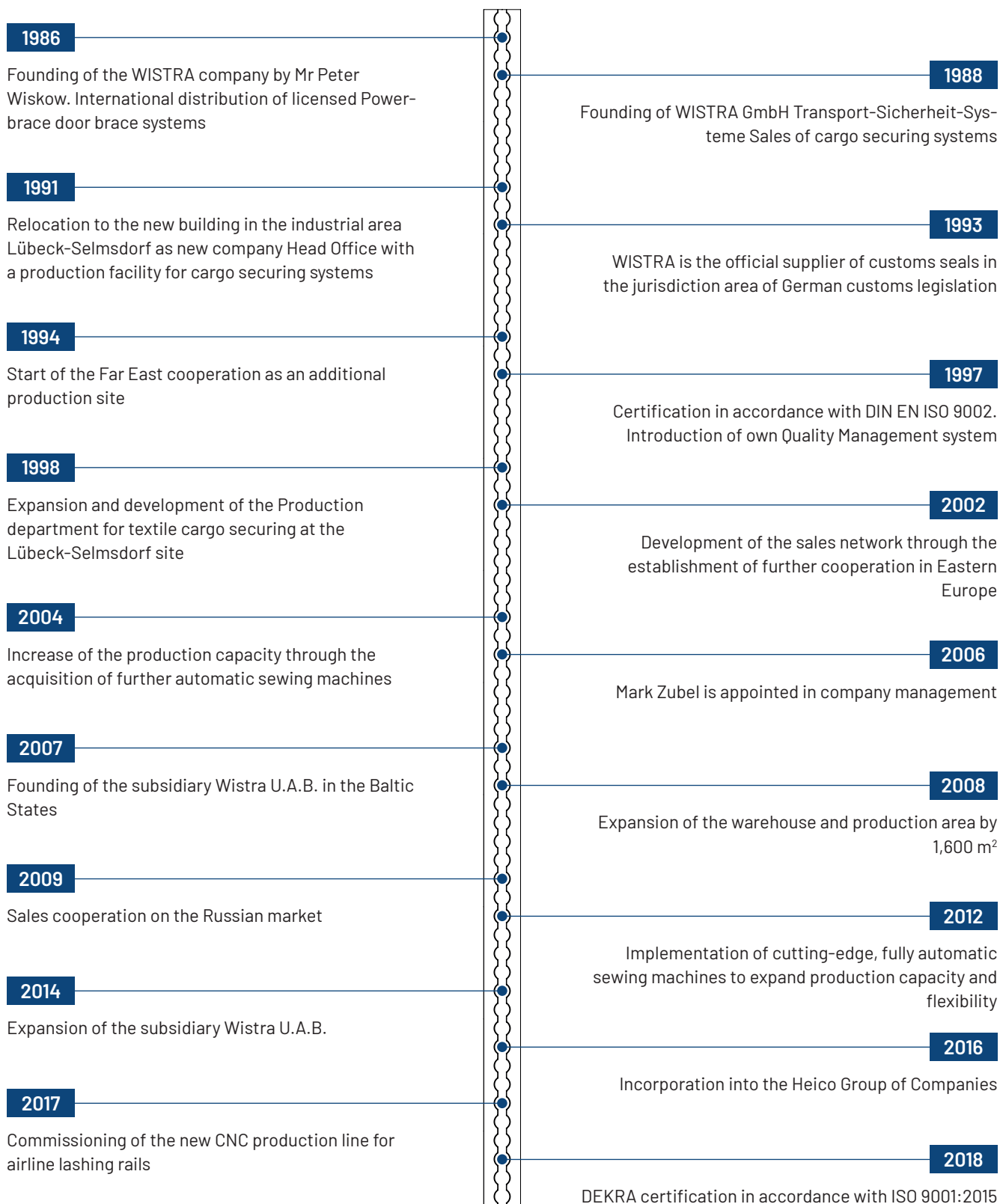
Our market position is based on competent staff who fulfil your needs with expertise and experience as well as application-oriented and high-quality products at market-related prices.

**WISTRA – your first contact for innovative cargo securing systems in Europe**

In addition, we are a member of the Heico Group with American market leaders in the field of cargo securing in development and production.



## More than 30 years of quality, continuous further development and technical modernisation

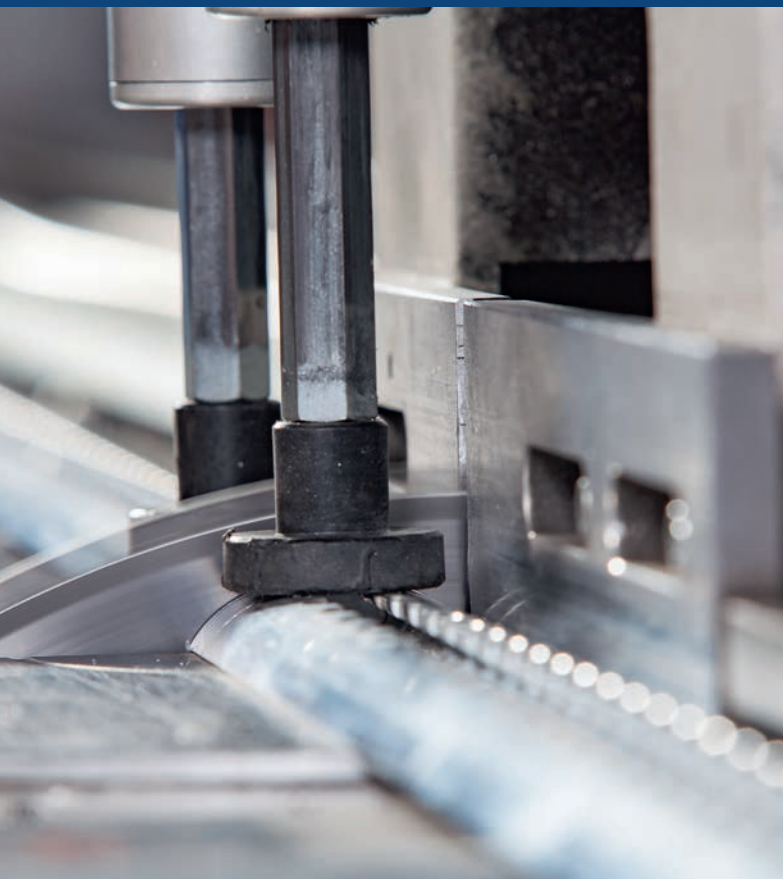




6







---

## Certified safety in development and production

---

### Quality

---

All products of the WISTRA product range are subjected to stringent safety tests.

Our Quality Management forms the basis for guaranteeing our consistently high quality.

Most of the products in our range are subjected to extraordinary continuous loading. Therefore, the materials processed by us always undergo extensive test series.

**This means optimum safety levels for our customers.**

---

### Production

---

Almost all products for textile and mechanical load securing are developed and designed by us.

Competent specialists ensure the installation and production of all our products in compliance with quality requirements with our modern machinery.

Years of cooperation with supplier partners worldwide make it possible for us to offer you an excellent price-performance ratio.

As a result of this cooperation, we can offer you a broad spectrum of special solutions, including the products of the "Fix Products" series, which we manufacture as the exclusive partner for Central Europe. Thanks to our own production line in Europe, we have created the necessary conditions in the sector of airline lashing rails to produce completely individual and tailor-made configurations for you - no matter how many hole pitches and radii.

You are certain to find the right solution for your individual requirements at WISTRA!



# Overview of our securing equipment

## Textile load securing

Our decades of experience and the continuous further development and supplementation of our product range enable us to offer you exceptionally designed solutions for textile load securing.

Be it air, water, rail or road – we have solutions for the individual requirements of your company regarding cargo securing.

Daily deployment under the most varied conditions proves the high degree of reliability of our products and affirms our use of the latest thermal processes.

WISTRA lashing straps are tested and manufactured to the highest standards in accordance with DIN EN 12195-2.

Our SAFEGUARD cargo securing nets are developed specifically for transport goods, adapted and made up individually. Manufacturing, marking and testing is performed in accordance with the VDI Guideline 2700 Part 3.3.

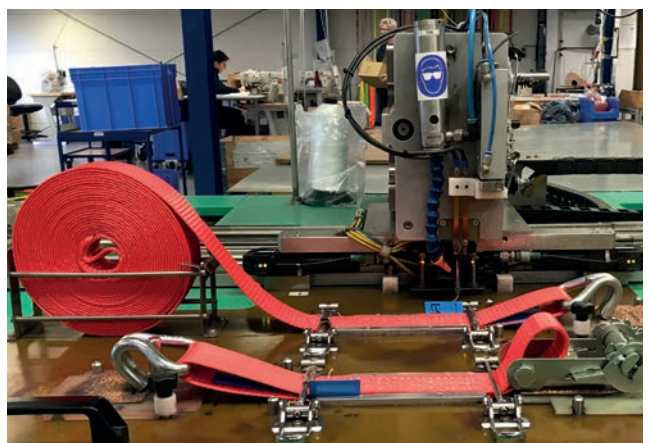
Many well-known logistics companies and global players use our SAFEGUARD cargo securing nets successfully in the areas of rail, postal, parcel service and general cargo.



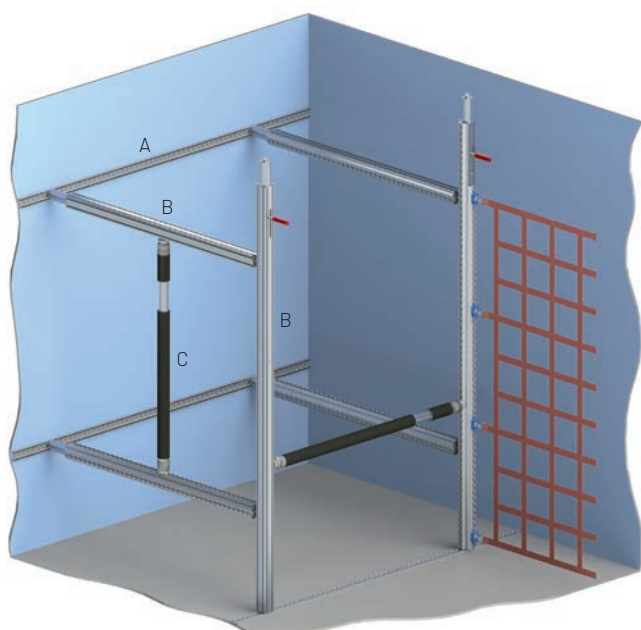
example: cargo nets to hold down cargo



example: lashing strap with quick-view label



example: production of lashing straps



A = Airline Rails  
B = Shoring Beam  
C = Airline Beam

## Mechanical cargo securing

We have developed customs-proven load securing devices of the highest level in cooperation with the Customs Crime Institute.

The patented WISTRA shoring beam POWERSTOP resulted from this, which is used to seal cavities in vehicles and can withstand loads of up to 2.5 t.

POWERSTOP is a real Hercules among cargo securing systems and is mainly used in the combined cargo traffic on road and rail.

The rigid cargo securing devices are generally summarised in the mechanical cargo securing product group. We protect the cargo in all vehicles safely and in form-fit shape.

WISTRA has designed many of these products as unit construction systems. This enables the use of various cargo securing devices for the rails and wall panels currently installed in vehicles.



example: airline beam and shoring beam in use

## For vans and trailers

Textile load securing systems, such as lashing straps and particularly cargo nets from the SAFEGUARD series, form part of the supply range for vans and trailers. These nets are available in many standard versions proven during practical experience as well as individual solutions according to customer requirements.

WISTRA cargo nets can be used to partition cargo space, for rear cargo securing and tying down cargo. They can be fixed to the standard lashing points mounted by the vehicle manufacturer. Matching end fittings can be found in this catalogue.

All other load securing systems, such as shoring beams and lashing straps, can, of course, be adapted to vans and trailers.

WISTRA thereby offers a complete and individual solution for cargo securing in vans and trailers.

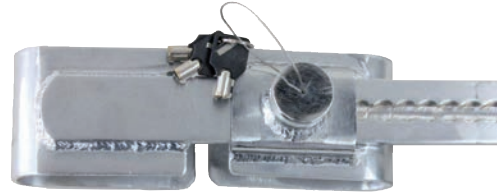
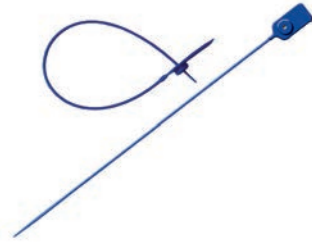
Feel free to request a solution proposal for your special transport securing system. Our qualified employees will be happy to offer advice and to prepare a corresponding offer for you.

## Security seals/theft protection

Owing to the opening of many borders for national and international trade, requirements for the safe transport of goods are increasing.

WISTRA has long been prepared for this situation and offers a broad range of security seals for your requirements regarding cargo securing.

WISTRA has assembled an extensive range of theft prevention systems in order to curb theft and manipulation. They are conceptualised in such a way that the entire means of transport is protected, at the same time preventing unauthorised access to the cargo.



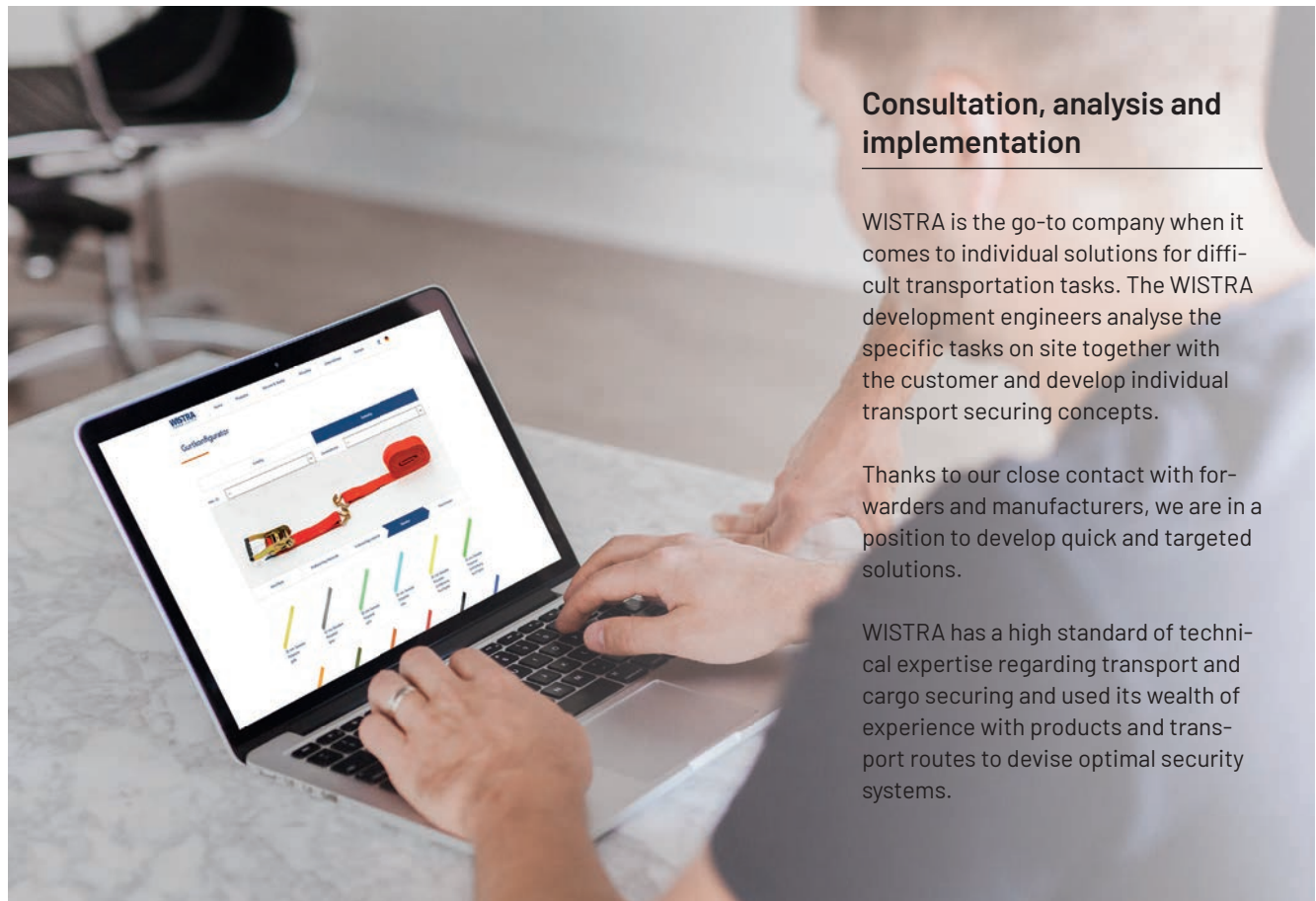
container seal and anti-theft device

## Lifting technology

The lifting technology range of WISTRA comprises round slings and lifting slings with reinforced end slings. They are only manufactured from tested material in order to meet the highest demands. Our round slings and lifting straps cover a cargo capacity of up to 10,000 kg and are manufactured according to current standards and are available in various lengths.



lifting strap and round sling



### Consultation, analysis and implementation

WISTRA is the go-to company when it comes to individual solutions for difficult transportation tasks. The WISTRA development engineers analyse the specific tasks on site together with the customer and develop individual transport securing concepts.

Thanks to our close contact with forwarders and manufacturers, we are in a position to develop quick and targeted solutions.

WISTRA has a high standard of technical expertise regarding transport and cargo securing and used its wealth of experience with products and transport routes to devise optimal security systems.





## Special requests

---

Various custom productions represent a special advantage for our customers.

WISTRA can supply lashing strap material in all colours and lengths, even if they do not appear in this catalogue.

Upon request, we can supply many items with your company logo and/or company name. Even customer-specific designs represent solvable challenges to us.

If you are unable to find an item in this catalogue, please contact us. Together, we are certain to find the right solution for you.

Top seller

## Airline lashing track 5503

---

More on page 68



**Cargo securing for  
transporters and trailers**

## Airline lashing tracks



The WISTRA airline lashing tracks and accessories are subject to constant material and quality checks.

With the continuously growing number of different designs, we offer our customers airline lashing tracks for the different areas in the transporter, trailer and luggage area.

An extensive offer of lashing straps, Safeguard cargo securing nets, locking and cargo bar systems, clothes transport rails as well as fastening systems and various end caps round off the range.

The WISTRA airline lashing program includes non-coated standard versions.

On request, we also offer special solutions and designs with holes or surface finishes such as powder or anodized coatings.

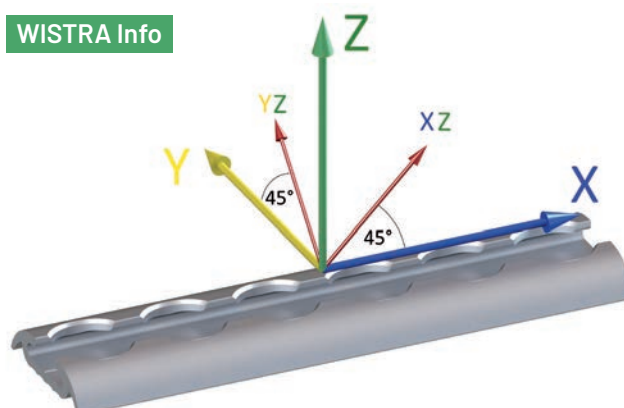
We deliberately do without impressive strength values. In our in-house test stand, the LC values for single and double fittings with the fastenings specified by us for the respective versions were determined.

Please note that the type of connection (screws, rivets, adhesives, etc.) and the strength of the substrate (spars, beams, sheets, etc.) are decisive when installing airline lashing tracks.

A further decisive factor is which lashing strap is used with which end fitting (single, double or quattro) and at which angle.

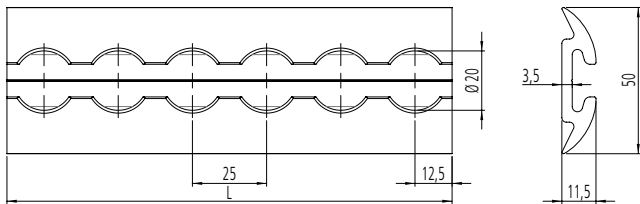
Our sales team will gladly assist you with your selection.

### WISTRA Info





## Airline lashing track 5503



### Technical data

- > semi-circular design
- > track width: 50 mm
- > hole diameter: 20 mm
- > hole pattern: 25 mm
- > length: 6,000 mm +5/-0 / 3,000 mm +1/-5 / 2,000 mm +1/-5
- > material: aluminium, untreated

Designation	Item number
Lashing 5503 air 6,000 mm bare	21550320-6000
Lashing 5503 air 3,000 mm bare	21550320-3000
Lashing 5503 air 2,000 mm bare	21550320-2000

### LC strength

WIS end fitting	382	380
Z 90°	500 daN	1,000 daN
X-Z 45°	500 daN	1,000 daN
Y-Z 45°	400 daN	900 daN

LC strength for mounting: every 75 mm with a countersunk screw M6 DIN 7991 10.9

## End cap in click version

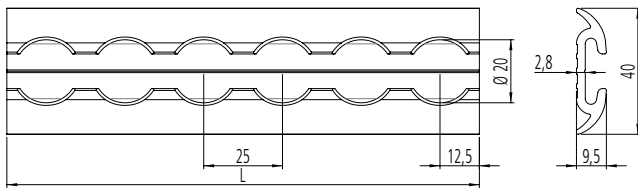


### Technical data

- > for airline track Type 5503
- > colour: black

Designation	Item number
Lashing 5106 air protection semi-black click	215106001540

## Airline lashing track 5513



### Technical data

- > semi-circular design
- > track width: 40 mm (slim version)
- > hole diameter: 20 mm
- > hole pattern: 25 mm
- > length: 3,000 mm +1/-5 / 2,000 mm +1/-5 / 1,000 mm +1/- 5
- > material: aluminium, untreated

Designation	Item number
Lashing 5513 Air 3,000 mm bare slim	21551320-3000
Lashing 5513 Air 2,000 mm bare slim	21551320-2000
Lashing 5513 air 1,000 mm bare slim	21551320-1000

### LC strength

WIS end fitting	382	380
Z 90°	500 daN	600 daN
X-Z 45°	500 daN	500 daN
Y-Z 45°	350 daN	400 daN

LC-strength for mounting: every 75 mm with a countersunk screw M5 DIN 7991 10.9

## End cap in click version

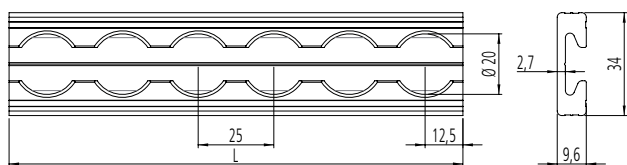


### Technical data

- > for airline track Type 5513
- > colour: black

Designation	Item number
Lashing 5113 air protection semi-circular slim click	215113001540

## Airline lashing track 5504



### Technical data

- > angular design
- > track width: 34 mm
- > hole diameter: 20 mm
- > hole pattern: 25 mm
- > length: 6,000 mm +5/-0 / 3,000 mm +5/-0 / 2,000 mm +5/-0
- > material: aluminium, untreated

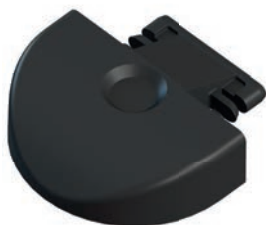
Designation	Item number
Lashing 5504 air 6,000 mm bare	21550420-6000
Lashing 5504 air 3,000 mm bare	21550420-3000
Lashing 5504 air 2,000 mm bare	21550420-2000

### LC strength

WIS end fitting	382	380
Z 90°	500 daN	500 daN
X-Z 45°	500 daN	500 daN
Y-Z 45°	400 daN	400 daN

LC-strength for mounting: every 75 mm with a countersunk screw M5 DIN 7991 10.9

## End cap in click version



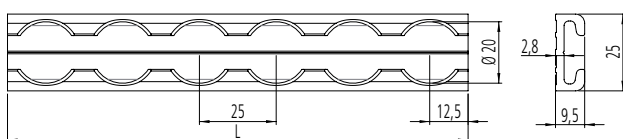
### Technical data

- > for airline track Type 5504
- > colour: black

Designation	Item number
Lashing 5103 air protection wedge square black	215103001540



## Airline lashing track 5514



### Technical data

- > angular design
- > track width: 25 mm (slim version)
- > hole diameter: 20 mm
- > hole pattern: 25 mm
- > length: 3,000 mm +1/-5 / 2,000 mm +1/-5 / 1,000 mm +1/-5
- > material: aluminium, untreated

Designation	Item number
Lashing 5514 air 3,000 mm bare slim	21551420-3000
Lashing 5514 air 2,000 mm bare slim	21551420-2000
Lashing 5514 air 1,000 mm bare slim	21551420-1000

### LC strength

WIS end fitting	382	380
Z 90°	450 daN	450 daN
X-Z 45°	350 daN	450 daN
Y-Z 45°	250 daN	300 daN

LC-strength for mounting: every 75 mm with a countersunk screw M5 DIN 7991 10.9

## End cap in click version



### Technical data

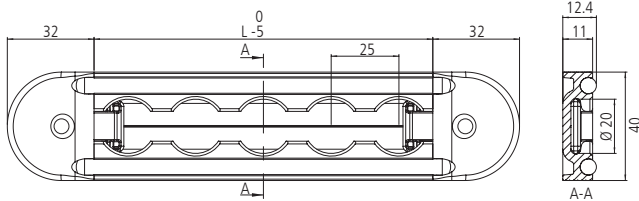
- > for airline track Type 5514
- > colour: black

Designation	Item number
Lashing 5114 air protection wedge slim click	215114001540

## Airline lashing track 5508, pre-assembled



blue colour based on RAL 5002



### Technical data

- > track width: 40 mm
- > hole diameter: 20 mm
- > hole pattern: 25 mm
- > length of lashing track: 3,000 mm +1/-5 / 2,000 mm +1/-5 / 1,000 mm +1/-5
- > length incl. end caps: 3,064 mm +1/-5 / 2,064 mm +1/-5 / 1,064 mm +1/-5
- > material: aluminium, untreated

### angular design black with integrated rubber protection and 2 end caps

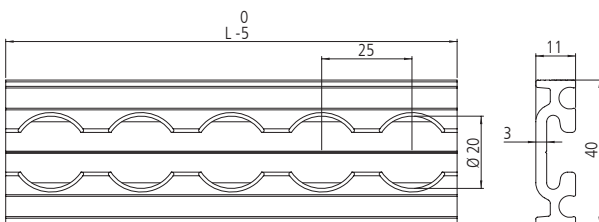
Designation	Item number
Lashing 5508 air set 3,000 mm	21550877-3000
Lashing 5508 air set 2,000 mm	21550877-2000
Lashing 5508 air set 1,000 mm	21550877-1000

### angular design blue with integrated silicone protection and 2 end caps

Bezeichnung	Artikelnummer
Lashing 5508 air set 3,000 mm	21550878-3000
Lashing 5508 air set 2,000 mm	21550878-2000
Lashing 5508 air set 1,000 mm	21550878-1000

## Airline lashing track 5508

18



### Technical data

- > design without rubber protection and without end caps
- > track width: 40 mm
- > hole diameter: 20 mm
- > hole pattern: 25 mm
- > length of lashing track: 3,000 mm +1/-5
- > material: aluminium, untreated

Designation	Item number
Lashing 5508 air 3,000 mm bare without rubber	21550820-3000

### LC strength

WIS end fitting	382	380
Z 90°	500 daN	1,000 daN
X-Z 45°	500 daN	1,000 daN
Y-Z 45°	400 daN	900 daN

LC strength for mounting: every 75 mm with a countersunk screw M6 DIN 7991 10.9

## Band for airline track Type 5508



blue colour based on RAL 5002

### Technical data

> rubber band black: 50 metres on a roll

Designation	Item number
Lashing 5508 rubber metre goods (50 m rolls)	21550800-50000

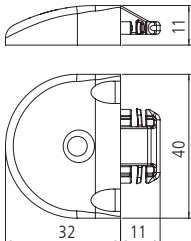
> silicone band blue: 50 metres on a roll

Designation	Item number
Lashing 5508 silicone metre goods (100 m rolls)	21550801-100000

## End cap in click version



blue colour based on RAL 5002



### Technical data

> for airline track Type 5508

#### Black plastic end cap

Designation	Item number
End cap 5104 for airline lashing track 5508	215104001540

#### Blue plastic end cap

Designation	Item number
End cap 5104 for airline lashing track 5508	215104001340



## Custom made track



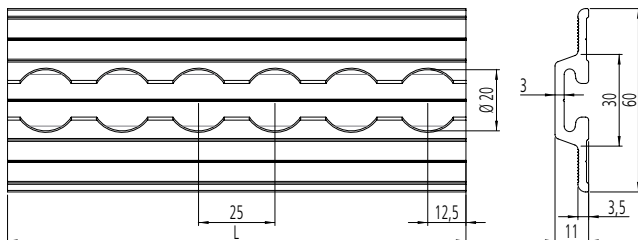
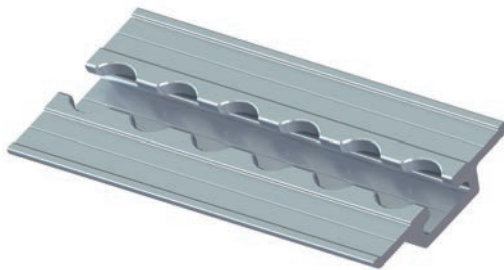
### Configure your airline lashing track yourself!

- 1 You determine the type.
- 2 You decide whether aluminium is untreated, anodised or powder-coated.
- 3 You determine the length.

- 4 You determine the number and design of the mounting hole.
- 5 You determine possible radii at the corners.

**We implement your wishes. Contact us!**

## Airline lashing track 5507



### Technical data

- > with top wing for integration in the cargo area floor
- > track width: 60 mm
- > hole diameter: 20 mm
- > hole pattern: 25 mm
- > length: 3,000 mm +1/-5
- > material: aluminium, untreated

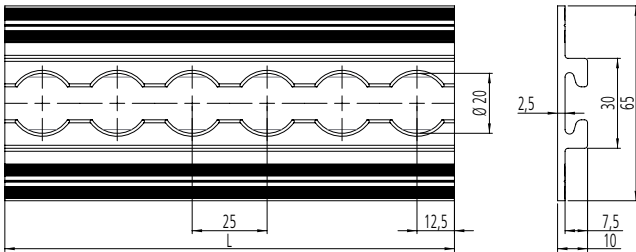
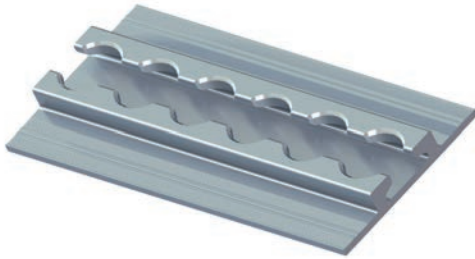
Designation	Item number
Lashing 5507 air 3,000 mm bare	21550720-3000

### LC strength

WIS end fitting	382	380
Z 90°	500 daN	1,000 daN
X-Z 45°	500 daN	1,000 daN
Y-Z 45°	400 daN	900 daN

LC strength for mounting: every 75 mm with a countersunk screw M6 DIN 7991 10.9

## Airline lashing track 5501



### Technical data

- > with bottom wing for integration in the cargo area floor
- > track width: 65 mm
- > track height: 10 mm
- > hole diameter: 20 mm
- > hole pattern: 25 mm
- > length: 3,000 mm +1/-5
- > material: aluminium, untreated

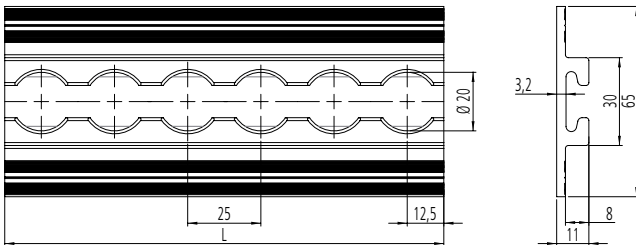
Designation	Item number
Lashing 5501 air 3,000 mm bare	21550120-3000

### LC strength

WIS end fitting	382	380
Z 90°	500 daN	500 daN
X-Z 45°	500 daN	500 daN
Y-Z 45°	400 daN	400 daN

Lashing capacity for attachment: every 75 mm oppositely with a countersunk screw M6 DIN 7380 8.8

## Airline lashing track 5510



### Technical data

- > with bottom wing for integration in the cargo area floor
- > track width: 65 mm
- > track height: 11 mm
- > hole diameter: 20 mm
- > hole pattern: 25 mm
- > length: 3,000 mm +1/-5
- > material: aluminium, untreated

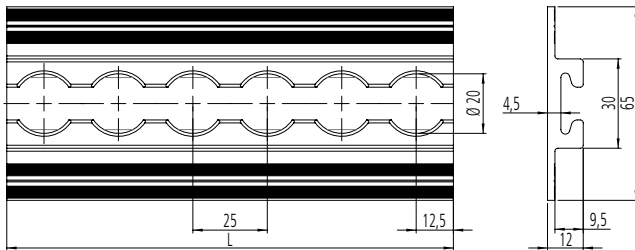
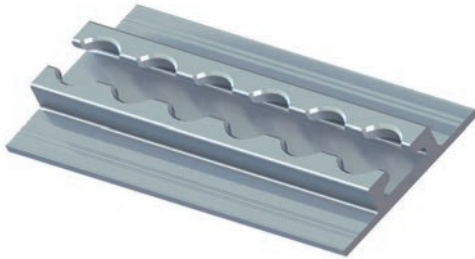
Designation	Item number
Lashing 5510 air 3,000 mm bare	21551020-3000

### LC strength

WIS end fitting	382	380
Z 90°	500 daN	1,000 daN
X-Z 45°	500 daN	1,000 daN
Y-Z 45°	400 daN	900 daN

Lashing capacity for attachment: every 75 mm oppositely with a countersunk screw M6 DIN 7380 8.8

## Airline lashing track 5506



### Technical data

- > with bottom wing for integration in the cargo area floor
- > track width: 65 mm
- > track height: 12 mm
- > hole diameter: 20 mm
- > hole pattern: 25 mm
- > length: 6,000 mm +1/-5 / 3,000 mm +1/-5
- > material: aluminium, untreated

Designation	Item number
Lashing 5506 air 6,000 mm bare 12 mm	21550620-6000
Lashing 5506 air 3,000 mm bare 12 mm	21550620-3000

### LC strength

WIS end fitting	382	380
Z 90°	500 daN	1,000 daN
X-Z 45°	500 daN	1,000 daN
Y-Z 45°	400 daN	900 daN

Lashing capacity for attachment: every 75 mm oppositely with a countersunk screw M6 DIN 7380 8.8

## End cap in click version



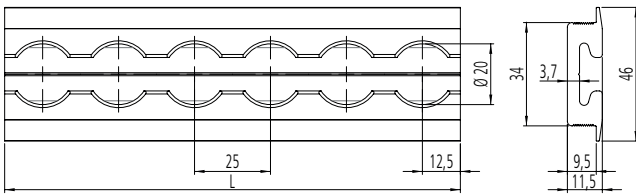
### Technical data

- > for airline track Type 5506
- > colour: black

Designation	Item number
Lashing 5105 air protection wedge black	215105001540



## Airline lashing track 5502



### Technical data

- > with top wing for integration in the cargo area floor
- > track width: 46 mm
- > hole diameter: 20 mm
- > hole pattern: 25 mm
- > length: 6,000 mm +1/-5 / 3,000 mm +1/-5 / 2,000 mm +1/-5
- > material: aluminium, untreated

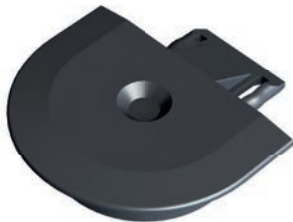
Designation	Item number
Lashing 5502 air 6,000 mm bare	21550220-6000
Lashing 5502 air 3,000 mm bare	21550220-3000
Lashing 5502 air 2,000 mm bare	21550220-2000

### LC strength

WIS end fitting	382	380
Z 90°	500 daN	1,000 daN
X-Z 45°	500 daN	1,000 daN
Y-Z 45°	400 daN	900 daN

LC strength for mounting: every 75 mm with a countersunk screw M6 DIN 7991 10.9

## End cap in click version

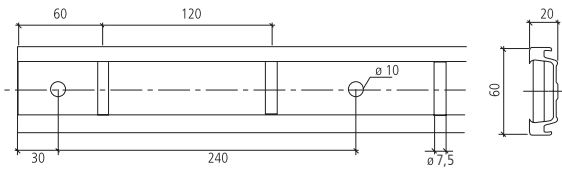


### Technical data

- > for airline track Type 5502
- > colour: black

Designation	Item number
End cap for lashing track 5502	215102001540

## Rail with lashing rods 4710



### Technical data

- > with rubber protection
- > rail width: 66 mm (incl. protective profile)
- > rail height: 23 mm (incl. protective profile)
- > rod diameter: 8 mm
- > hole pitch: Ø 10 mm, grid: 240 mm
- > pin: Ø 7.5 mm, grid: 120 mm
- > aluminium, untreated

Designation	Item number
Lashing rods 4710 6000 mm	21471020-6000
Lashing rods 4710 3000 mm	21471020-3000
Lashing rods 4710 2000 mm	21471020-2000

## End cap

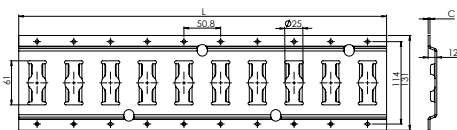
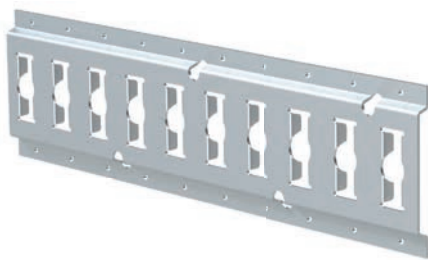


### Technical data

- > for 4710 rail with lashing rods
- > color: black

Designation	Item number
Lashing rods 4710 end cap black	212106661540

## Anchor combination lashing rail 3009

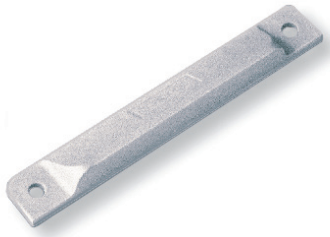


### Technical data

- > with drain hole
- > rail width: 131 mm
- > rail height: 12 mm
- > hole pitch: 50.8 mm

Designation	Item number
Lashing anchor combination 3 mm aluminum	213009300020

## End cap

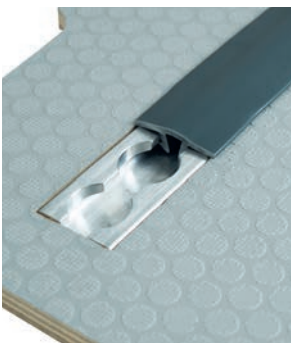


### Technical data

- > for anchor combination lashing rail type 3009
- > color: grey

Designation	Item number
Lashing combination end cap 3009 black	212109951240

## Airline lashing rail cover



grey colour based on RAL 7011

### Technical data

- > cover for airline rails
- > standard length: 3,000 mm
- > weight: 665 g
- > material: plastic
- > color: grey

Designation	Item number
Grey 3000 mm cover profile for lashing rail 5109	21510901-3000

## Cover plug for the airline track



### Technical data

- > material: plastic
- > prevents direct contact between cargo and lashing track

Designation	Item number
Cover plug plastic airline	21510100



## LED airline lashing track 5523

**NEW!**  
Airline track with LED strips



### Electrical connection

The connection is made by a 2-core cable with 2 x 0.5 mm<sup>2</sup> cross-section.

If required, the caps can also be screwed on. For this purpose, the caps are drilled from the back with a 4.3 mm drill bit.

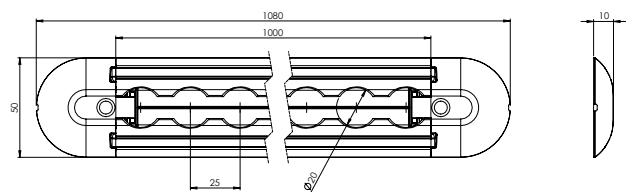
**Note:** The maximum voltage of the LED strip is 13.8 V. If the vehicle's electrical system is not limited to this voltage, a voltage limiter must be used to prevent the LED track from overheating.

### Technical data

- > semi-circular version with 2 integrated LED strips and 2 end caps
- > track width: 50 mm
- > track height: 10 mm
- > hole diameter: 20 mm
- > hole pattern: 25 mm
- > length of lashing track: 1,000 mm +1/-5
- > length incl. end caps: 1,080 mm +1/-5
- > material: aluminium, untreated
- > nominal voltage: 12 V
- > nominal power: 13.8 W (total power 27.6 W)
- > colour temperature: 6,500 K
- > lumen: 870 lm per strip
- > protection class: IP67
- > weight: 565 g

Available as a set of 5 with 1 m or 2 m connection cable

Designation	Item number
Lashing 5523 air 1,000 mm bare	215523770500
Lashing 5523 air 2,000 mm bare	215523770501



## End cap without connection terminal (click version)



### Technical data

- > for airline track Type 5523
- > colour: black

Designation	Item number
End cap click version 5523	215123011540

## End cap with connection terminal (click version)



### Technical data

- > for airline track Type 5523
- > colour: black

Designation	Item number
End cap click version 5523	215123501540

## LED strip



### Technical data

- > length: 1,025 mm +/- 5
- > incl. 45 mm connection cable
- > incl. double-sided adhesive tape on the back side
- > nominal voltage: 12 V
- > nominal power: 13.8 W
- > colour temperature: 6,500 K
- > lumen: 870 lm per strip
- > protection class: IP67

Designation	Item number
Light channel 1,000 mm	21552300-1000

## Angle airline track



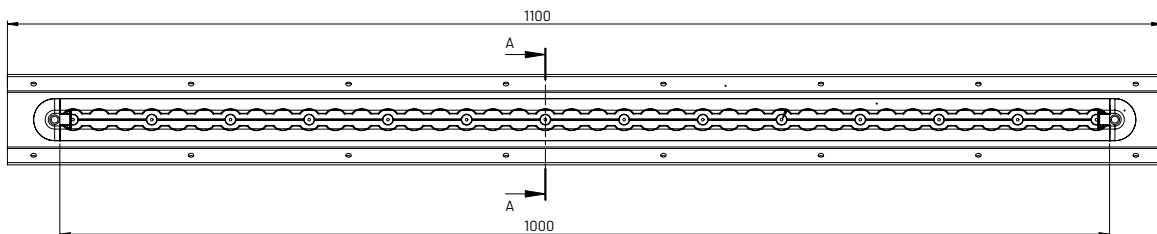
**Note:** This angle airline track is intended for corner mounting (90 °).



### Technical data

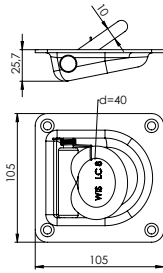
- > shape (track): round / half-round
- > length: 1000 mm +/- 5 mm
- > hole diameter: 20 mm (airline)
- > hole pattern: 25 mm
- > material: bright aluminum
- > length of angle plate: 1100 mm
- > length of airline track 1000 mm +/- 5mm, including end caps 1050 mm +/- 5mm
- > every 150 mm holes for fastening the angle plate

Designation	Item number
Angle airline track	16000000203





## Lashing point 315

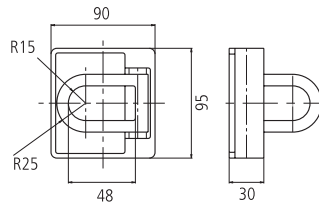


### Technical data

- > LC (lashing capacity): 800 daN
- > material: steel, galvanised
- > size: 105 x 105 mm

Designation	Item number
Lashing point 315	243150000012

## Lashing point 370

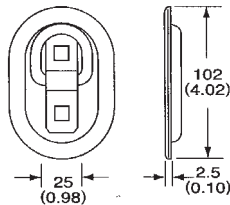


### Technical data

- > LC (lashing capacity): 2,500 daN
- > material: steel, untreated
- > size: 95 x 90 x 30 mm

Designation	Item number
Lashing point 370	243700000010

## Lashing point 360

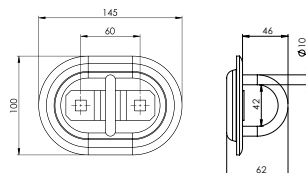


### Technical data

- > LC (lashing capacity): 350 daN
- > material: steel, galvanised
- > size: 104 x 70 mm (oval shape)

Designation	Item number
Lashing point 360	243600000012

## Lashing point 362



### Technical data

- > LC (lashing capacity): 800 daN
- > material: steel, galvanised
- > size: 145 x 100 mm (oval shape)

Designation	Item number
Lashing point 362	243620000012

## Screw-in fitting



### Technical data

- > thread: M8
- > LC (lashing capacity): 500 daN
- > incl. drive-in nut

Designation	Item number
Screw-in fitting M8 incl. drive-in nut	140000037701

## U-Clamps



### Technical data

- > suitable for attaching 25 mm straps
- > material: steel, galvanised
- > overall length: 68 mm
- > overall width: 15 mm
- > overall height: 15 mm
- > hole spacing: 52 mm
- > mounting holes for 5 mm rivets
- > weight: ca. 22 g

Designation	Item number
U-Clamps 15 x 52	950300001812



Suitable for use with the WTR 1000 ratchet lashing strap  
**WTR 1000 ratchet lashing strap**

- > strap: 25 mm, blue

Designation	Item number
WTR 1000-025 0.3 + 3.2 m signal blue SN	1251293

## Single airline fitting 382



### Technical data

- > LC (lashing capacity): 500 daN
- > housing made of plastic
- > colour of plastic: blue

Designation	Item number
End fitting 382 WIS single airline fitting blue	140000038200

## Single airline fitting 385



### Technical data

- > LC (lashing capacity): 500 daN
- > housing made of plastic
- > colour of plastic: red

Designation	Item number
End fitting 385 WIS single airline fitting red	140000038500

## Single airline fitting 386



### Technical data

- > LC (lashing capacity): 500 daN
- > housing made of plastic
- > colour of plastic: black

Designation	Item number
End fitting 386 WIS single airline fitting black	140000038600

## Single airline fitting 387



### Technical data

- > LC (lashing capacity): 500 daN
- > housing made of plastic
- > spring, ring and holding pin made of stainless steel
- > colour of plastic: anthracite

Designation	Item number
End fitting 387 single airline anthracite stainless steel	140000038700

## Single airline fitting 388



### Technical data

- > LC (lashing capacity): 500 daN
- > housing made of plastic
- > colour of plastic: orange

Designation	Item number
End fitting 388 WIS single airline orange	140000038800

## Single airline fitting 379



### Technical data

- > LC (lashing capacity): 500 daN
- > ring diameter (inner): 34 mm
- > material: steel, aluminium

Designation	Item number
End fitting 379 for airline track	140000037900

## Double airline fitting 380



### Technical data

- > LC (lashing capacity): 10 kN
- > material: steel, galvanised

Designation	Item number
End fitting 380 airline track double	140000038000

## Double airline fitting 381



### Technical data

- > LC (lashing capacity): 400 daN
- > ring diameter (inner): 25 mm
- > material: steel, galvanised

Designation	Item number
End fitting 381 airline track double	140000038100



## Quattro airline fitting 383



### Technical data

- > LC (lashing capacity): 25 kN
- > material: steel, galvanised

Designation	Item number
End fitting 383 airline track 4-fold	14000038300

## Airline lashing point

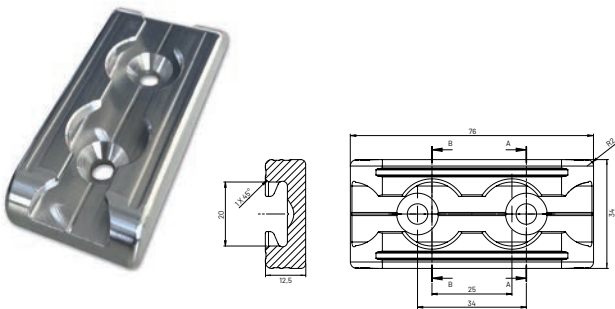


### Technical data

- > including 2 mounting holes
- > mounting holes: M5 countersunk head
- > diameter: 45 mm
- > material: aluminium, untreated

Designation	Item number
Lashing 5600 air 45 mm aluminium round 5.5 mm	21560125

## Rectangular airline lashing point



### Technical data

- > L x W x H 76 mm x 34 mm x 12.5 mm
- > Including 2 mounting holes M6 countersunk head
- > material: aluminum, untreated
- > load capacity: 400 daN
- > weight: approx. 60 g

Designation	Item number
Rectangular airline lashing point	2430003

## Wire hooks for airline fitting



### Technical data

- > with PVC coating for hanging up cables or clothing
- > carrying capacity: 50 kg

Designation	Item number
End fitting 527 wire hook for 382 etc.	140000052700

## Slot nut with two threaded holes M6



### Technical data

- > for fixing different materials to airline lashing tracks
- > material: steel, galvanised
- > size: 50 x 18 mm
- > distance between threaded holes: 25 mm

Designation	Item number
Slot nut 2 x M6 thread	215108200612

## Slot nut with three threaded holes M6



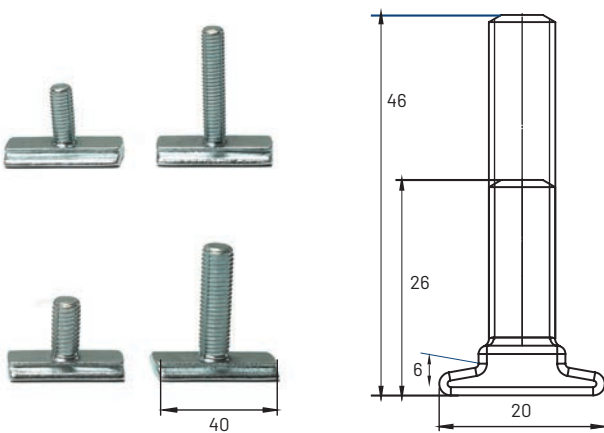
### Technical data

- > for fixing different materials to airline lashing tracks
- > material: steel, galvanised
- > size: 75 x 18 mm
- > distance between threaded holes: 25 mm

Designation	Item number
Slot nut 3 x M6 thread	215108300612

## Sliding block with threaded bolt M8 and M10

34



### Technische Daten

- > for fixing various products to airline lashing tracks
- > threaded bolt M8/M10
- > material: steel, galvanized
- > LC (lashing capacity): 2.000 daN

Designation	Item number
Sliding block M8 with threaded bolt 20 mm	21510830
Sliding block M8 with threaded bolt 40 mm	21510831
Sliding block M10 with threaded bolt 20 mm	21510832
Sliding block M10 with threaded bolt 40 mm	21510833

## Screw fitting with self-locking nut for airline lashing tracks



### Technical data

- > thread: M8 x 25 / 30 / 40 / 60
- > material: steel, galvanized
- > pre-assembled

Designation	Item number
Screw fitting 5107 M8 x 25 with nut and shim, clamping range untill 7 mm	21510784
Screw fitting 5107 M8 x 30 with nut and shim, clamping range untill 11 mm	21510785
Screw fitting 5107 M8 x 40 with nut and shim, clamping range untill 22 mm	21510786
Screw fitting 5107 M8 x 60 with nut and shim, clamping range untill 42 mm	21510787

## Screw-through fitting with plastic star grip for airline lashing tracks



### Technical data

- > thread: M8 x 25 / 30 / 40 / 60
- > material: steel, galvanized
- > pre-assembled

Designation	Item number
Screw fitting 5108 M8 x 25 with star grip, clamping range untill 8 mm	21510864
Screw fitting 5108 M8 x 30 with star grip, clamping range untill 12 mm	21510865
Screw fitting 5108 M8 x 40 with star grip, clamping range untill 22 mm	21510866
Screw fitting 5108 M8 x 60 with star grip, clamping range untill 41 mm	21510867

## Shovel holder with rubber band



### Technical data

- > length of the rubber band: 60 mm / 80 mm

Designation	Item number
Shovel holder with elastic band 60 mm	392003
Shovel holder with elastic band 80 mm	392004

## Edge protection 2500



### Technical data

- > for strap width 25 mm
- > material: plastic
- > colour: black
- > weight: 22 g
- > side length: 55/95 mm

Designation	Item number
Edge protection black 25 mm	162500000040



# WISTRA AirlineStop

**NEW!**  
AirlineStop for safe transport



Scan QR code and watch video

[You can find the video here.](#)

The airline track must be mounted flush with the vehicle floor and not deeper.

## Against pallet slipping on the loading space

With this AirlineStop, pallets can be secured against slipping on the loading space. The fitting can be used directly as a blockage in combination with integrated airline rails in the vehicle floor.

Suitable holding profiles between two fittings are **50 x 50 mm aluminum profiles**, WISTRA article numbers: **221851-1975** and **221851-1000**.

It is also possible to use a locking bar with a 19 mm pin at the ends. Due to the symmetrical design of the article, there are no different fittings for the left or right side.

In illustration B you can see the application of the article tilted by 90 degrees. For this application we recommend securing the connection with a pin / split of the aluminum profile.

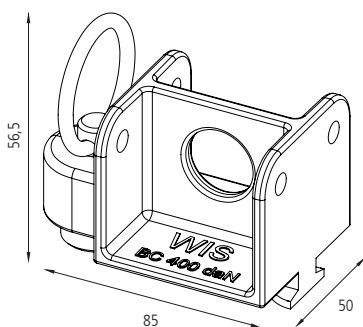
## Technical data

- > for profiles up to 50 mm thickness
- > BC (breaking capacity) 400 daN
- > material: steel, galvanised
- > size: 85 mm x 50 mm x 56,5 mm
- > weight: 410 g
- > height above the vehicle floor: 49 mm
- > center hole:  $\varnothing$  20 mm for  $\varnothing$  19 mm spigots
- > 4 x 6 mm hole for dowel pins

### Also available as a set:

- Set 1: 2x AirlineStop, 1x aluminum profile (length 1.000 mm)
- Set 2: 2x AirlineStop, 1x aluminum profile (length 1.975 mm)

Designation	Item number
WISTRA AirlineStop	140000040000
Aluminum profile 50 x 50 mm 1000 mm	221851-1000
Aluminum profile 50 x 50 mm 1975 mm	221851-1975
WISTRA AirlineStop Set 1	221104001000
WISTRA AirlineStop Set 2	221104001975



A: AirlineStop with a barrier bar



B: Lateral application

## WTR 1000 Ratchet lashing strap



### Technical data

- > two-part - SE 0.5 m + LE 4.5 m
- > according to EN 12195-2
- > LC 500 daN with straight tension
- > STF 200 daN
- > strap: 25 mm, red

with end fitting **002** (claw hook)

Designation	Item number
WTE 1000-002 0.5 + 4.5 m red	1255107



with end fitting **025** (flat hook with safety mechanism)

Designation	Item number
WTR 1000-025 0.5 + 4.5 m red	1255216



with end fitting **379** (single airline fitting)

Designation	Item number
WTR 1000-379 0.5 + 4.5 m red	11909023790545

## WTR 1000 Ratchet lashing strap



### Technical data

- > two-part – SE 0.2 m + LE 0.73 m / SE 0.2 m + LE 3.2 m
- > according to EN 12195-2
- > LC 500 daN with straight tension
- > STF 200 daN
- > strap: 25 mm, signal blue
- > The long end is connected to the short end by a safety seam.

with end fitting **382** (single airline fitting)

Designation	Item number
WTR 1000-382 0.2 + 0.73 m signal blue SN	1251286



with end fitting **201** (flat hook)

Designation	Item number
WTR 1000-201 0.2 + 3.2 m signal blue SN	1250678



with end fitting **025** (flat hook with safety mechanism)

Designation	Item number
WTR 1000-025 0.3 + 3.2 m signal blue SN	1251293

## WTR 800 Ratchet lashing strap



### Technical data

- > two-part - SE 0.5 m + LE 4.5 m
- > according to EN 12195-2
- > LC 400 daN with straight tension
- > STF 200 daN
- > strap: 25 mm, grey, yellow

with end fitting **202** (stainless steel snap hook)

Designation	Item number
WTR 800-202 0.5 + 4.5 grey	1250990



with end fitting **202** (snap hook)

Bezeichnung	Artikelnummer
WTR 800-202 0.2 + 1.8 m signal blue	1250812



with end fitting **002** (claw hook)

Designation	Item number
WTR 800-002 0.5 + 4.5 m yellow	1257988



with end fitting **025** (flat hook with safety mechanism)

Designation	Item number
WTR 800-025 0.5 + 4.5 m yellow	11906030250545



with end fitting **379** (single airline fitting)

Designation	Item number
WTR 800-379 0.5 + 4.5 m yellow	1258794

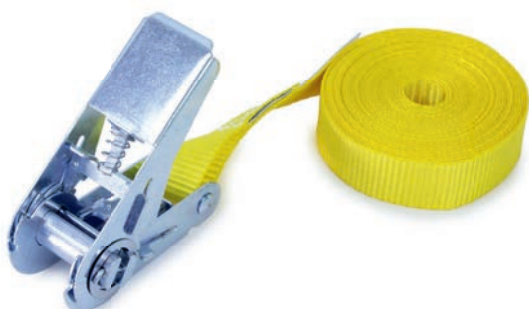




with end fitting **381** (double airline fitting)

Designation	Item number
WTR 800-381 0.5 + 4.5 m yellow	1259052

## WTR 800 Pressure ratchet lashing strap



### Technical data

- > single-part – 3.0 m / 5.0 m
- > according to EN 12195-2
- > lashing capacity LC 800 daN in strapping
- > strap: 25 mm, yellow

Designation	Item number
WTR 800 single-part 3.0 m yellow	1259473
WTR 800 single-part 5.0 m yellow	1259475

## WTR 1500-826 Ratchet lashing strap



### Technische Daten

- > two-part – FE 0,5
- > according to EN 12195-2
- > LC 750 daN with straight tension
- > STF 210 daN
- > with end fitting **826** (for Combi and Anchor Combi lashing rails)
- > strap: 50 mm, green

Bezeichnung	Artikelnummer
WTR 1500-826 0.2 + 0.8 green SN*	1500533
WTR 1500-826 0.2 + 1.8 green	1504226
WTR 1500-826 0.5 + 2.5 green	1504250
WTR 1500-826 0.5 + 4.5 green	1504252

\* SN = securing seam (fixed and loose ends can not be separated) – e.g. for gas bottle holder

## WTK 350 cam buckle strap



### Technical data

- > single-part – 3.0 m / 5.0 m
- > according to EN 12195-2
- > LC 350 daN in strapping
- > strap: 25 mm, yellow

Designation	Item number
WTK 350 single-part 3.0 m yellow	1253673
WTK 350 single-part 5.0 m yellow	1253675

## WTW 250 Automatic ratchet lashing strap



### Technical data

- > two-part – SE 0.2 m + LE 2.0 m
- > based on EN 12195-2
- > LC 125 daN with straight tension
- > STF 27 daN
- > strap: 25 mm, black

with end fitting **002** (claw hook)

Designation	Item number
WTW 250-002 0.2 + 2.0 m black	1250337

with end fitting **025** (flat hook with safety mechanism)

Designation	Item number
WTW 250-025 0.2 + 2.0 m black	1250293



with end fitting **382** (single airline fitting)



Designation	Item number
WTW 250-382 0.2 + 2.0 m black	1250346

with end fitting **725** (S-hook with PVC cover)



Designation	Item number
WTW 250-725 0.2 + 2.0 m black	1250150

## WISTRA Safeguard cargo securing nets



For more than 20 years, WISTRA GmbH has also been offering cargo securing nets in its product range.

We offer a wide range of applications – even beyond the realms of cargo securing. The common lashing strap widths 25 mm, 35 mm and 50 mm and the different mesh apertures in combination with connection adapters for the vehicle or trailer, offer a variety of options.

We could implement more than 300 different versions for our customers up to now. The Safeguard cargo securing nets are planned and manufactured according to customer requirements.

Besides many individual products, customer-specific solutions have proven invaluable and have been manufactured more than 10,000 times.

Key application areas include:

- rear cargo securing in closed bodies, the various swap bodies, containers and special containers
- lateral cargo securing, e.g. for curtainsiders
- cargo securing over the cargo on the floor and to the sides
- retention nets for short timber transports
- restraining nets for transporters
- tie-down lashing cargo securing nets

***Production, marking and testing are carried out in accordance with VDI Guideline 2700 Sheet 3.3 (and in accordance with DIN EN 12195-2).***







This results in a multitude of design possibilities, which are to be determined on the basis of years of experience at WISTRA and on the basis of the customer's requirements specification.

The following key data must be taken into account:

- use, handling and load data
- mesh size and fabric insert
- quantity and kind of tensioning and connecting elements
- use of linkages
- use of additional anti-theft devices

Safeguard load securing nets are manufactured for renowned customers like Deutsche Post, GLS, Hermes and many others, and have proven their practical worth across Europe.

In this catalogue, you will find a selection of net options. Please contact us if these do not meet your requirements. The WISTRA team is at your disposal with its many years of experience and also produces nets individually in quantities from 1 piece.



## "QuickKEP" cargo securing net



### Technical data

- > vertical transporter cargo securing net
- > strap width: 25 mm
- > strap colour: red
- > with aluminium rods both sides
- > 2 mounting levels for hanging up
- > adapted to the contour of the MB Sprinter – Height 2
- > LC net mounting point 250 daN
- > LC net total 600 daN
- > mesh check, production and marking according to VDI guideline 2700 Part 3.3
- > net height approx. 1,700 mm
- > weight net: approx. 6.8 kg
- > weight fitting 380 total: approx. 1.8 kg

#### Side mounting

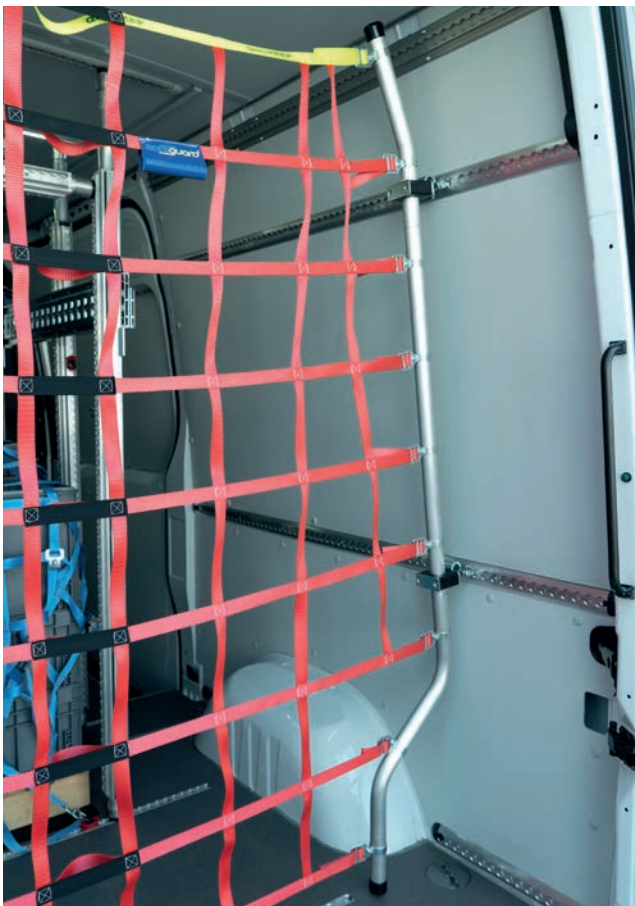
- > WIS hook-in device for double airline fitting 380
- > 16 double airline fittings are already included in the set

#### Packed as a set for MB Sprinter – Height 2

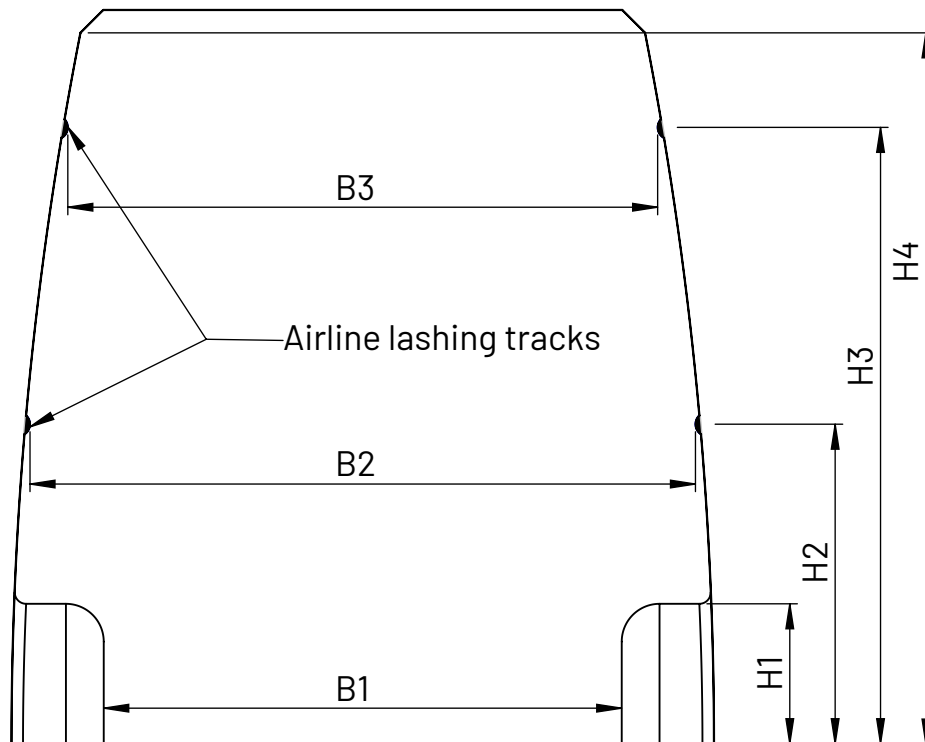
Designation	Item number
Safeg QuickKEP Sprinter H2	273480000000

#### Packed as a set for VW Crafter

Designation	Item number
Safeg QuickKEP Crafter	273480000400



## "QuickKEP" dimensions



<b>company</b>	
<b>vehicle manufacturer</b>	
<b>vehicle model</b>	
<b>H1</b>	
<b>B1</b>	
<b>H2</b>	
<b>B2</b>	
<b>B3</b>	
<b>H3</b>	
<b>H4</b>	

[Click here for the online form.](#)

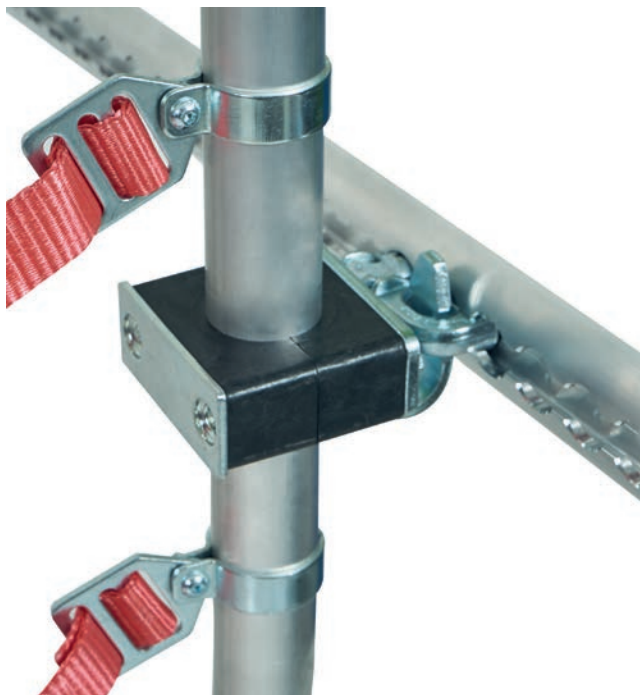


## "QuickMED" medium cargo securing net



### Technical data

- > suitable for Citroën Jumpy, Fiat Talento, Ford Transit Connect, MB Vito, Opel Vivaro, Renault Trafic, VW T5 / T6, as well as other models
- > vertical pickup truck load safety net
- > is locked by spring pressure on the bottom pin in the hooking device
- > strap width: 25 mm
- > with aluminium rods both sides
- > 2 mounting levels for hanging up
- > LC net mounting point 250 daN
- > LC net total 600 daN
- > mesh check, production and marking according to VDI guideline 2700 Part 3.3
- > net height approx. 1,200 mm
- > weight net: approx. 4.8 kg
- > weight fitting 380 total: approx. 900 g



### Side mounting

- > WIS hook-in device for double airline fitting 380
- > 8 double airline fittings are already included in the set

### Packed as a set

Designation	Item number
Safeg QuickMED medium	274290000100



## "QuickMED" small cargo securing net



### Technical data

- > suitable for Citroën Berlingo, Fiat Doblo, Ford Transit Courier, MB Citan, Opel Combo, Renault Kango, VW Caddy, as well as other models
- > vertical pickup truck load safety net
- > is locked by spring pressure on the bottom pin in the hooking device
- > strap width: 25 mm
- > with aluminium rods both sides
- > 2 mounting levels for hanging up
- > LC net mounting point 250 daN
- > LC net total 600 daN
- > mesh check, production and marking according to VDI guideline 2700 Part 3.3
- > net height approx. 1,080 mm
- > weight net: approx. 4,3 kg
- > weight fitting 380 total: approx. 900 g

### Side mounting

- > WIS hook-in device for double airline fitting 380
- > 8 double airline fittings are already included in the set

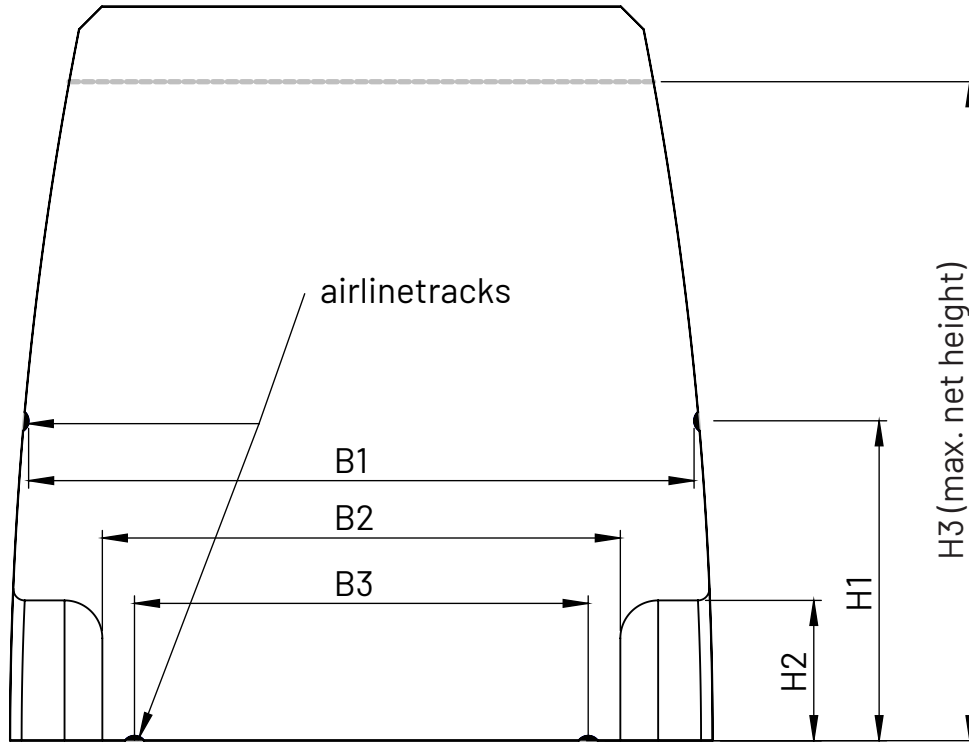
### Packed as a set

Designation	Item number
Safeg QuickMED small	274290000200





## "QuickMED" medium und small dimensions



<b>company</b>	
<b>vehicle manufacturer</b>	
<b>vehicle model</b>	
<b>H1</b>	
<b>B1</b>	
<b>H2</b>	
<b>B2</b>	
<b>H3</b>	
<b>B3</b>	

[Click here for the online form.](#)

## Cargo securing net "4 levels"



### Technical data

- > for MB Sprinter / VW Crafter Height 2
- > vertical transport net
- > strap width: 25 mm
- > strap colour: red
- > mesh size approx. 175 x 175 mm.
- > 4 mounting levels
- > width approx. 1,450/1,700 mm x height approx. 1,700 mm
- > LC net mounting point 200 daN
- > LC net total 400 daN
- > mesh check, production and marking according to VDI guideline 2700 Part 3.3
- > net height approx. 1,800 mm

The following end fittings are included per box:

- > 8 x end fitting 382 for airline lashing tracks
- > 8 x end fitting 025 for track with pins

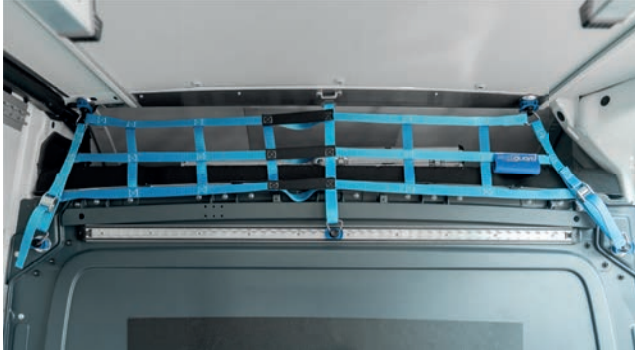
#### Side mounting

- > on both sides by means of attached clamp lock
- > four mounting levels measured from the floor approx. 50 mm / 700 mm / 1,540 mm / 1,800 mm
- > net width
  - mounting level with approx. 50 mm: approx. 1,600 mm,
  - mounting level with approx. 700 mm: approx. 1,600 mm
  - mounting level with approx. 1,540 mm: approx. 1,400 mm
  - mounting level with approx. 1,800 mm: 1,350 mm

#### Packed as a set

Designation	Item number
Safeg 25 Crafter/Sprinter 4 levels	271350000008

## WISTRA alcove netting



### Technical data

- > load securing net for the storage space above the cab
- > adapted to the contour of the MB Sprinter - Hight 2
- > strap width: 25 mm
- > strap colour: blau
- > LC net mounting point 200 daN
- > LC net total 150 daN
- > mesh check, production and marking according to VDI guideline 2700 Part 3.3
- > net height approx. 215 mm
- > weight net: 900 g
- > attachment with 5x fitting 382 and hook 213
- > 5x round airline attachment points, 1x flat hook as well as 1x hooks and clamps are included in the set

### Packed as a set

Designation	Item number
Safeg alcove network for Sprinter H2	2743101

## Cargo securing net for tie-down lashing with ratchets



### Technical data

- > size: 1,575 x 1,350 mm
- > mesh size: 200 x 200 mm
- > strap width: 25 mm wide
- > strap colour: red
- > 14 D-rings 703 are sewn circumferentially around the net
- > additionally 4 end fittings 025 on each of the short sides
- > including 4 fastening straps WTR 1000 single-part 4.0 m red
- > including 4 freewheeling standard claw hooks 002
- > mesh check, production and marking according to VDI guideline 2700 Part 3.3

### Packed as a set

Designation	Item number
Safeg 25 1,575 x 1,350 mm MW 200 Standard 2010	272130000000

## Cargo securing net for low tensioning with clamping locks



### Technical data

- > size: 1,375 x 1,225 mm
- > mesh size: 125 x 125 mm
- > strap width: 25 mm
- > strap colour: blue
- > 1 end fitting 025 at each corner
- > additionally 4 end fittings 025 tapering inwards inside net
- > for adaptation with clamping lock 605 and long end with end fitting 025 length 1.0 m
- > clamping locks and long ends are included in the net
- > mesh check, production and marking according to VDI guideline 2700 Part 3.3

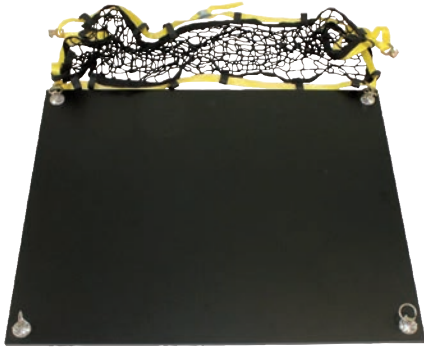
### Packed as a set

Designation	Item number
Safeg 25 1,375 x 1,225 mm MW 125 blue	272220000001



## Cargo securing net for tensioning down

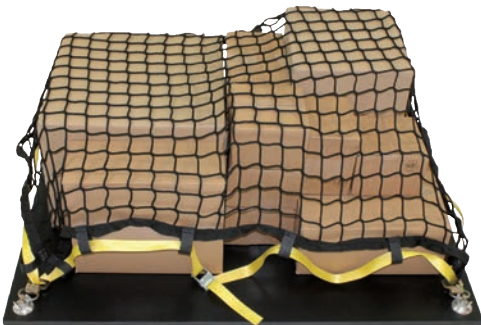
①



②



③



④



### Technical data

Consisting of:

- > 1 x cargo securing net  
basis of VDI 2700 Part 3.3  
material: knitted yarn  
material thickness: 3 mm  
mesh size approx. 45 mm.  
maximum mesh tensile force: approx. 1,250 N  
yarn colour: black  
all around with edging tape in black  
and 20 strap loops
- > 1 x WTK 500 single-part 4,100 mm yellow
- > 4 x end fitting **002** (claw hook) / **725** (S-hook with PVC cover) / **201** (flat snap hook) / **025** (flat hook with safety mechanism) / **382** (single airline fitting)
- > LC net total: 400 daN
- > LC net mounting point: 350 daN
- > packaging: bagged with sticker
  
- > size: 1,290 x 730 mm

Designation	Item number
Safeg 1,250 x 730 mm knitted WTK WIS 002 yellow	272830002210
Safeg 1,250 x 730 mm knitted WTK WIS 725 yellow	272830725210
Safeg 1,250 x 730 mm knitted WTK WIS 201 yellow	272830201210
Safeg 1,250 x 730 mm knitted WTK WIS 025 yellow	272830025210
Safeg 1,250 x 730 mm knitted WTK WIS 382 yellow	272830382210

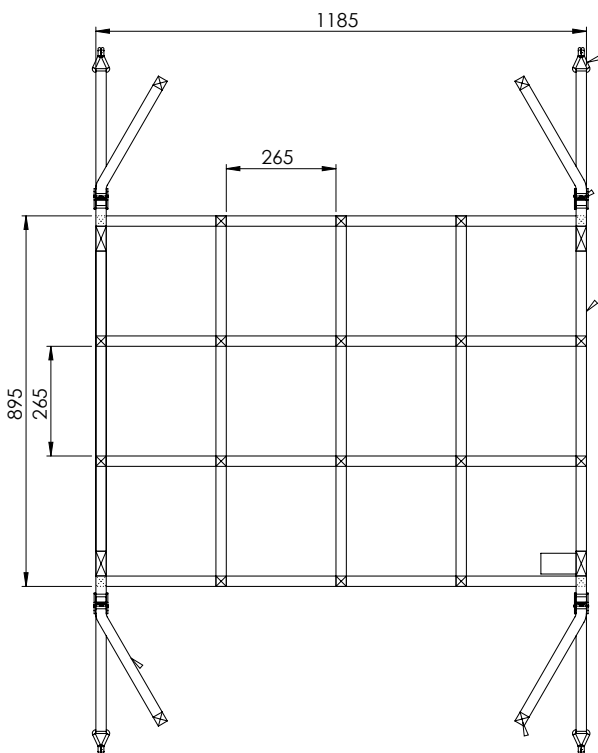
- > size: 2,290 x 1,500 mm

Designation	Item number
Safeg 2,290 x 1,500 mm knitted WTK WIS 002 yellow	272940002210
Safeg 2,290 x 1,500 mm knitted WTK WIS 725 yellow	272940725210
Safeg 2,290 x 1,500 mm knitted WTK WIS 201 yellow	272940201210
Safeg 2,290 x 1,500 mm knitted WTK WIS 025 yellow	272940025210
Safeg 2,290 x 1,500 mm knitted WTK WIS 382 yellow	272940382210





## WISTRA WheelNet



### Technical data

- > size: 1185 x 895 mm
- > mesh size: 265 x 265 mm
- > strap width: 25 mm
- > strap colour: rot
- > LC net total: 300 daN
- > 4 x end fitting 002
- > 4 x clamping lock 25 mm
- > weight net: approx. 1,16 kg

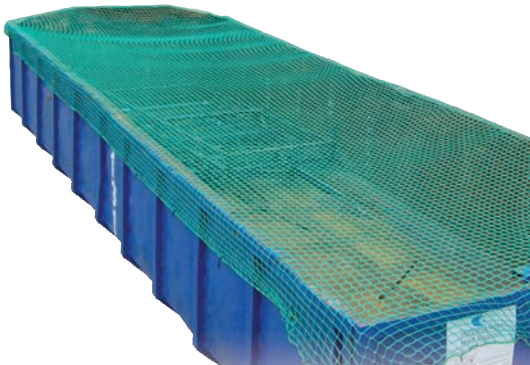
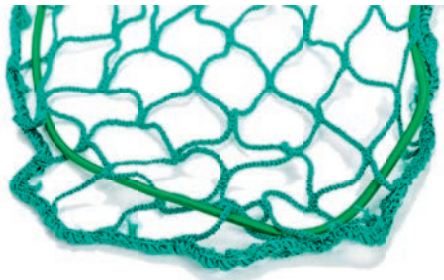
Designation	Item number
Safeg tire net for trunk	274300000000



Scan QR code and watch video

[You can find the video here](#)

## Covering nets



### Technical data

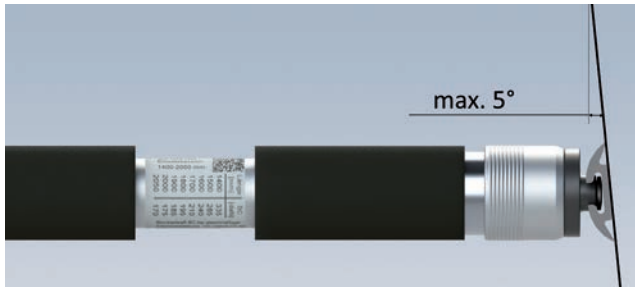
- > cover net made of PPM knotless
- > according to VDI 2700, sheet 3.3
- > mesh size: 30 x 30 mm
- > material thickness: 2 mm
- > net colour: green
- > with edge hem and circumferential rubber rope

Designation	Item number
Net cover 2 mm MW 30 1.4 x 2.3 m	275200312314
Net cover 2 mm MW 30 1.8 x 3.3 m	275200313318
Net cover 2 mm MW 30 2.0 x 3.0 m	275200312030
Net cover 2 mm MW 30 2.0 x 3.5 m	275200312035
Net cover 2 mm MW 30 2.5 x 3.5 m	275200313525
Net cover 2 mm MW 30 2.5 x 4.5 m	275200314525
Net cover 2 mm MW 30 4.5 x 3.0 m	275200314530

- > cover net made of PPM knotless
- > mesh size: 50 x 50 mm
- > material thickness: 3 mm
- > net colour: green
- > with edge hem and circumferential rubber rope

Designation	Item number
Net cover 3 mm MW 50 1.5 x 2.2 m	275300511522
Net cover 3 mm MW 50 1.5 x 2.5 m	275300511525
Net cover 3 mm MW 50 1.5 x 2.7 m	275300512715
Net cover 3 mm MW 50 2.0 x 3.0 m	275300512030
Net cover 3 mm MW 50 2.5 x 3.5 m	275300512535
Net cover 3 mm MW 50 2.5 x 4.5 m	275300514525
Net cover 3 mm MW 50 3.0 x 3.5 m	275300513035
Net cover 3 mm MW 50 3.0 x 4.0 m	275300513040
Net cover 3 mm MW 50 3.5 x 5.0 m	275300513550
Net cover 3 mm MW 50 3.5 x 5.5 m	275300515535
Net cover 3 mm MW 50 3.5 x 6.0 m	275300513560
Net cover 3 mm MW 50 3.5 x 7.0 m	275300513570
Net cover 3 mm MW 50 3.5 x 8.0 m	275300513580

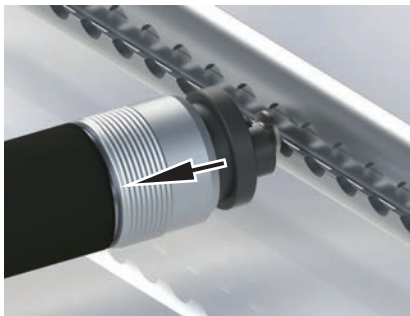
## Shoring beam "Airline Beam" 1855



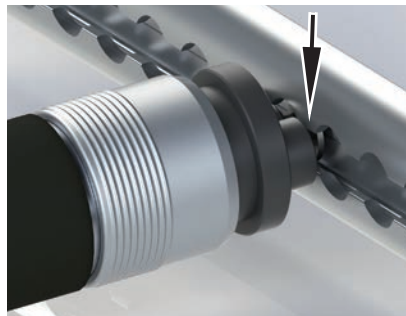
### Product description

Used in conjunction with airline lashing tracks running parallel in the vehicle, the trailer or other means of transport, the Airline Beam ensures cargo securing with positive locking. The Airline Beam can be used horizontally and vertically for cargo securing. The automatic airline pins on both sides snap into one pair of holes in each of the airline lashing tracks.

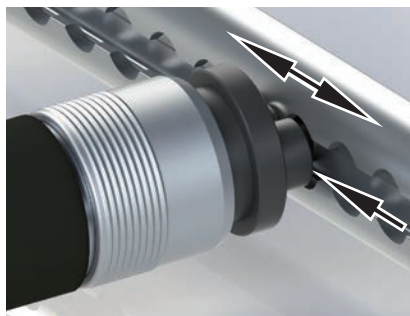
#### 1. unlocking



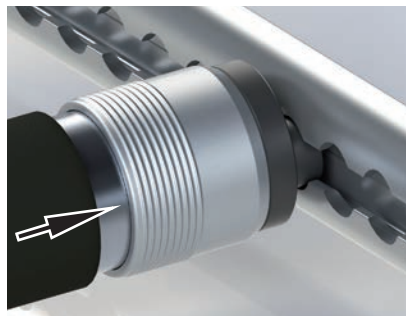
#### 2. inserting



#### 3. shifting



#### 4. locking



Example of a label:  
Can be customised with your logo and your address on request!

### Advantages

- > suited for horizontal and vertical application
- > In conjunction with non-slip materials, cargo with a weight of up to 2,250 kg can be secured in the direction of travel using one Airline Beam.
- > smooth and continuous telescopic adjustment
- > no protruding operating controls over its entire range
- > supporting tube and hand piece with PVC coating for comfortable handling even in cold outside temperatures, as well as for protection of the load
- > The automatic airline pins on both sides snap into one pair of holes in each of the airline lashing tracks.
- > The automatic airline pins do not damage the material within the airline lashing track.
- > When the Airline Beam is inserted by the user, no simultaneous pressure in both directions is required.
- > The airline automatic spigot is prevented from slipping out by a locking mechanism activated by applying pressure to the side panel.
- > Thanks to the locking mechanism in the airline lashing track, the system does not damage the transport vehicle.



## Shoring beam "Airline Beam" 1855



### Technical data

- › with PVC coating in black
- › support tube diameter: 42 mm
- › both sides with innovative automatic pin for the airline lashing track
- › with pull-out stop for 150 mm telescopic distance

Designation	possible field of application	Blocking capacity	Item number
Airline Beam 1855 650 mm WIS black bare	650 – 760 mm	550 – 675 daN	221855-150-0650
Airline Beam 1855 800 mm WIS black bare	800 – 910 mm	475 – 600 daN	221855-150-0800
Airline Beam 1855 900 mm WIS black bare	900 – 1,010 mm	450 – 575 daN	221855-150-0900
Airline Beam 1855 1000 mm WIS black bare	1,000 – 1,110 mm	425 – 550 daN	221855-150-1000
Airline Beam 1855 1100 mm WIS black bare	1,100 – 1,210 mm	400 – 550 daN	221855-150-1100
Airline Beam 1855 1200 mm WIS black bare	1,200 – 1,310 mm	400 – 525 daN	221855-150-1200
Airline Beam 1855 1300 mm WIS black bare	1,300 – 1,410 mm	375 – 525 daN	221855-150-1300
Airline Beam 1855 1400 mm WIS black bare	1,400 – 1,510 mm	375 – 500 daN	221855-150-1400
Airline Beam 1855 1500 mm WIS black bare	1,500 – 1,610 mm	375 – 450 daN	221855-150-1500
Airline Beam 1855 1600 mm WIS black bare	1,600 – 1,710 mm	375 – 425 daN	221855-150-1600
Airline Beam 1855 1700 mm WIS black bare	1,700 – 1,810 mm	350 – 400 daN	221855-150-1700
Airline Beam 1855 1800 mm WIS black bare	1,800 – 1,910 mm	350 – 375 daN	221855-150-1800
Airline Beam 1855 1900 mm WIS black bare	1,900 – 2,010 mm	350 – 350 daN	221855-150-1900

- › with pull-out stop for 350 mm telescopic distance

Designation	possible field of application	Blocking capacity	Item number
Airline Beam 1855 900 mm WIS black bare	900 – 1,210 mm	350 – 575 daN	221855-350-0900
Airline Beam 1855 1000 mm WIS black bare	1,000 – 1,310 mm	325 – 550 daN	221855-350-1000
Airline Beam 1855 1100 mm WIS black bare	1,100 – 1,410 mm	300 – 550 daN	221855-350-1100
Airline Beam 1855 1200 mm WIS black bare	1,200 – 1,510 mm	300 – 525 daN	221855-350-1200
Airline Beam 1855 1300 mm WIS black bare	1,300 – 1,610 mm	275 – 525 daN	221855-350-1300
Airline Beam 1855 1400 mm WIS black bare	1,400 – 1,710 mm	275 – 500 daN	221855-350-1400
Airline Beam 1855 1500 mm WIS black bare	1,500 – 1,810 mm	275 – 450 daN	221855-350-1500
Airline Beam 1855 1600 mm WIS black bare	1,600 – 1,910 mm	250 – 425 daN	221855-350-1600
Airline Beam 1855 1700 mm WIS black bare	1,700 – 2,010 mm	250 – 400 daN	221855-350-1700
Airline Beam 1855 1800 mm WIS black bare	1,800 – 2,110 mm	250 – 375 daN	221855-350-1800
Airline Beam 1855 1900 mm WIS black bare	1,900 – 2,210 mm	250 – 350 daN	221855-350-1900



## Shoring beam "Airline Beam" 1855



### Technical data

- > with PVC coating in black
- > support tube diameter: 42 mm
- > both sides with innovative automatic pin for the airline lashing track
- > with pull-out stop for 600 mm telescopic distance

Designation	possible field of application	Blocking capacity	Item number
Airline Beam 1855 1100 mm WIS black bare	1,100 - 1,660 mm	250 - 550 daN	221855-600-1100
Airline Beam 1855 1200 mm WIS black bare	1,200 - 1,760 mm	225 - 525 daN	221855-600-1200
Airline Beam 1855 1300 mm WIS black bare	1,300 - 1,860 mm	225 - 525 daN	221855-600-1300
Airline Beam 1855 1400 mm WIS black bare	1,400 - 1,960 mm	225 - 500 daN	221855-600-1400
Airline Beam 1855 1500 mm WIS black bare	1,500 - 2,060 mm	200 - 450 daN	221855-600-1500
Airline Beam 1855 1600 mm WIS black bare	1,600 - 2,160 mm	200 - 425 daN	221855-600-1600
Airline Beam 1855 1700 mm WIS black bare	1,700 - 2,260 mm	200 - 400 daN	221855-600-1700
Airline Beam 1855 1800 mm WIS black bare	1,800 - 2,360 mm	200 - 375 daN	221855-600-1800
Airline Beam 1855 1900 mm WIS black bare	1,900 - 2,460 mm	200 - 350 daN	221855-600-1900

## Storage rail for "Airline Beam"



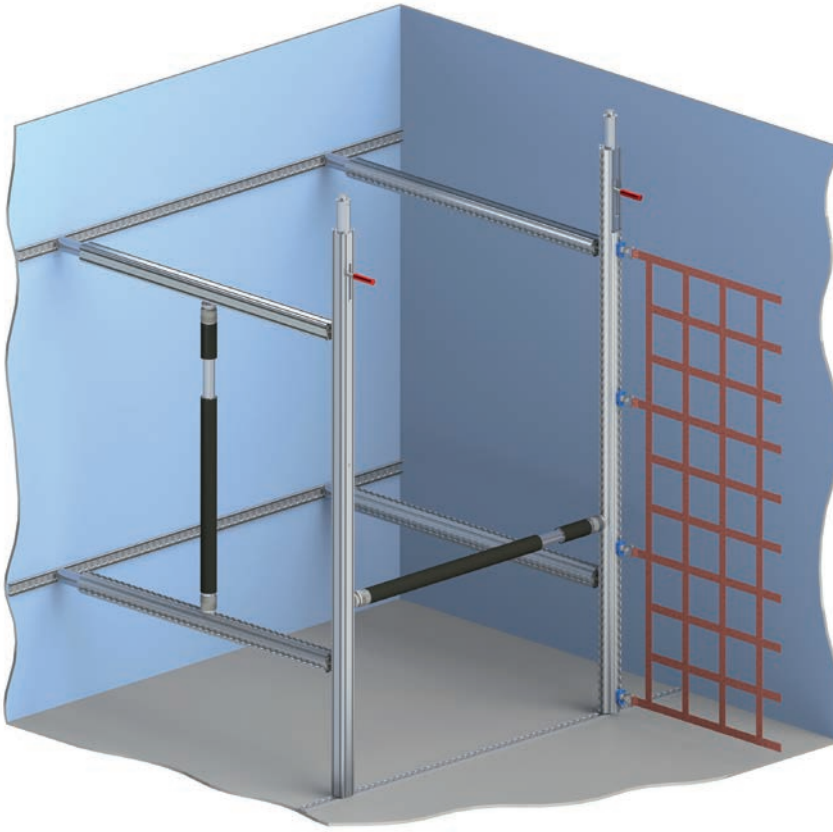
### Technical data

- > material: steel, black black KTL coated
- > to be fastened to the airline rail with a screw fitting
- > Set consists of 2 parking angles, 2 star handles with Airline screws 8 x 25
- > W x H x D: 79 x 120 x 50 mm

Designation	Item number
Storage rail for two Airline Beams along the side	215110010



## Aluminium shoring beam modular system



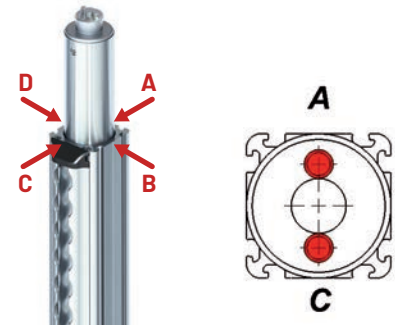
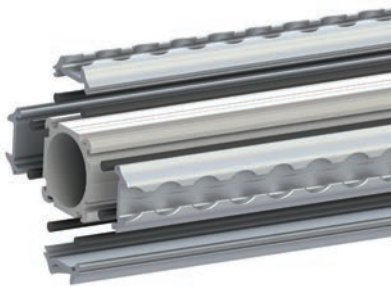
### Strength meets individuality

The new WISTRA shoring beam system is based on a new 50 x 50 mm aluminium profile. In the design phase, the focus was on the many customer requests we received.

Blocking forces BC of up to 900 daN were achieved at our in-house testing facility, depending on the version.

Its true strength is its versatility and individual connection options to the inserted airline sliding profile.

In addition to the Airline Beam 1855, WISTRA lashing straps as well as Safe-guard cargo securing nets or further accessories for the airline lashings can be used.



### The supporting tube

The new square shoring beams can be equipped in their basic form or additionally with inserted airline lashing tracks or with rubber protection along their entire length or in sections.

### The connection systems

In addition to the design features of the supporting tube, we offer the shoring beams with the proven compression spring telescopic tubes for perforated rail systems or freely telescopic without compressive forces with the WISTRA-Airline automatic pin in conjunction with the airline lashing tracks.

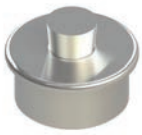
### Version secured against rotation

The pin version with anti-twist protection type 19 + type 25, the pin is mounted lengthways from side A to side C.

## Aluminium "Spairbalken 1851" (shoring beam)

with compression spring telescope and handle

### Pin design



Type 09



Type 19  
non-rotating  
Ensure correct  
positioning!



Type 24



Type 25  
non-rotating  
Ensure correct  
positioning!



### for lashing track



Hole pitch  
ø 20 mm



Airline version



Hole pitch  
ø 25 mm

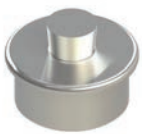


Combi track  
ø 25 mm

## Aluminium "Spairbalken 1857" (shoring beam)

with compression spring telescope

### Pin design



Type 09



Type 19  
non-rotating  
Ensure correct  
positioning!



Type 24



Type 25  
non-rotating  
Ensure correct  
positioning!



Type 32



### for lashing track



Hole pitch  
ø 20 mm



Airline version



Hole pitch  
ø 25 mm



Combination  
track ø 25 mm

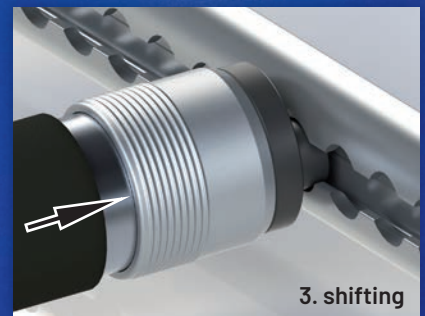
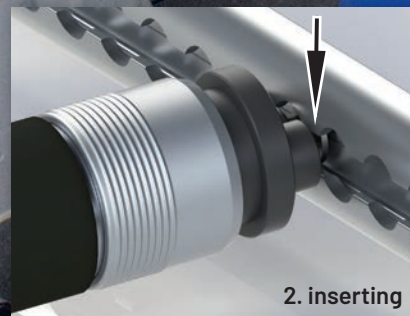


Keyhole 34/22

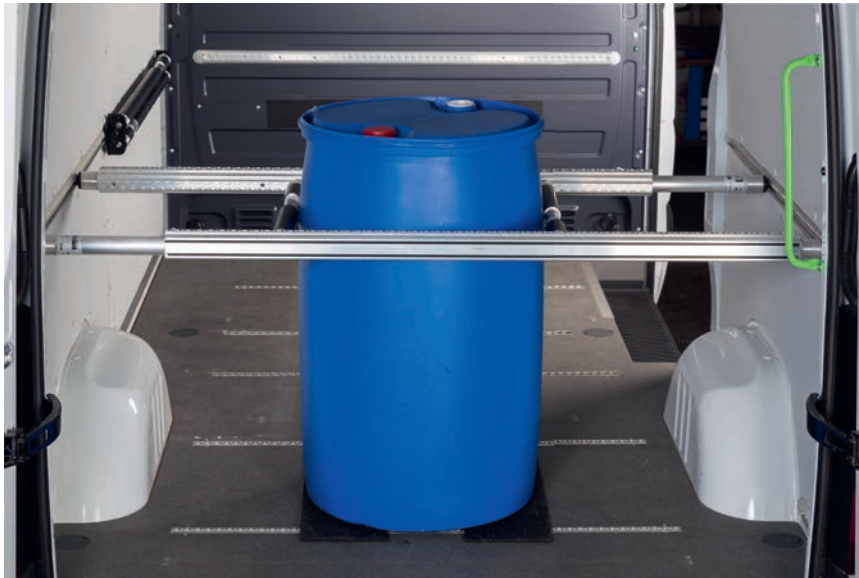
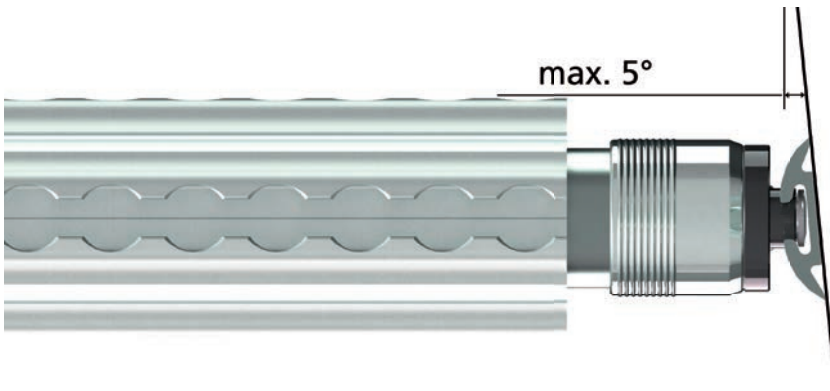
# Aluminium shoring beam 1856 telescopic

## Product description

The shoring beam is used in conjunction with airline lashing tracks running parallel in the vehicle, trailer or other means of transport to ensure cargo securing with positive locking. The shoring beam can be used both horizontally and vertically for securing cargo. The automatic airline pins on both sides snap into one pair of holes in each of the airline lashing tracks.







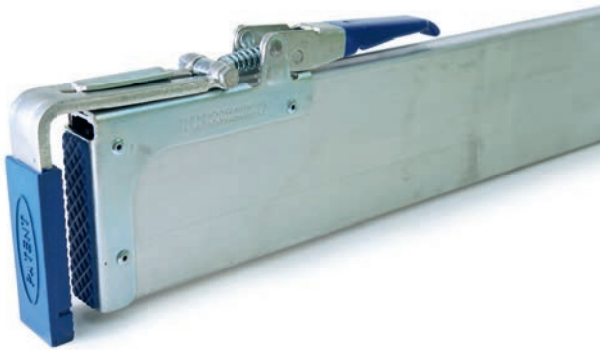
horizontal application



vertical application



## Aluminium parting wall lock for trailers



### Technical data

- > application range: 1,250 – 1,550 mm / 1,500 – 1,800 mm / 2,100 – 2,400 mm
- > max. blocking force: BC 400 daN for uniform area loading up to 2,700 mm

Designation	Item number
Between aluminium 1,250 – 1,550 mm	2374530-1250
Between aluminium 1,500 – 1,800 mm	2374530-1500
Between aluminium 2,100 – 2,400 mm	2374530-2100

## Garment rail TA for airline lashing tracks



### Technical data

- > with the aid of 2 double-airline end fittings 380, it snaps clothes rails into airline lashing tracks
- > area of application: must be specified with each enquiry or order
- > support tube: chrome-plated
- > without spring function
- > equipped with two Velcro straps for securing the throw bar

Designation	Item number
Clothes rail TA Transp Air TR according to specification	267500000000



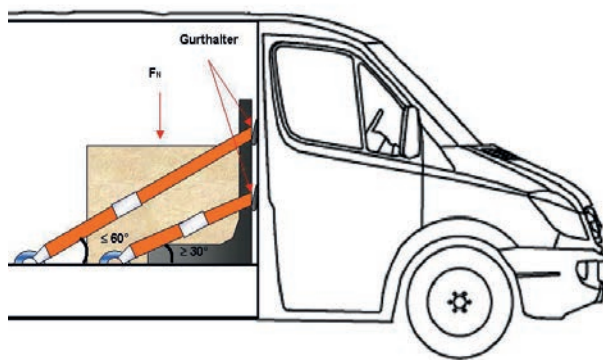
Hang the garment rail in the double airline fitting



Double airline fitting 380



## Carbon "QuickWall" cargo securing wall



### Technical data

- > made of high-quality carbon fibre material
- > colour: black
- > in conjunction with the lashing straps used on two levels in the means of transport ensures cargo securing with positive locking
- > W x H x D: 1,190 x 800 x 360 mm
- > weight: approx. 12 kg
- > DEKRA-certified (No. 201432956 dated 17/10/2014)
- > use with RH mats and lashing straps LC 1000 daN easy and straightforward
- > the max. total payload of the QuickWall is 1,400 kg



Scan QR code and watch video

[You can find the video here](#)

**As a set incl. 2 lashing straps WTR 2200-520 0.5 + 5.5 m and 2x non-slip mat roll 1,250 x 3 x 150 mm**

Designation	Item number
Carbon wall	16920000



---

## Interesting facts

---

### Terms

---

#### Lashing devices

consist of the tensioning device (e.g. strap, chain, cord), the tensioning element (e.g. ratchet, winding mechanism, tension lock) and possibly the connecting element (end-fitting, hook)

#### Lashing strap

is a lashing device consisting of the tensioning element or a lashing strap clamp and a lashing strap with or without connecting element.

#### Strap

is a woven textile strap

#### Tensioning element

is a mechanical device for introducing the tension force in a lashing device

#### End-fitting

is a device for connecting the lashing strap or the tensioning element with the lashing point or the fixture point of the load

#### Initial tension indicator

is a device indicating the initial tension in the lashing system

#### Single-part lashing strap

is a lashing device consisting of a textile strap and a tensioning element (use of freely moveable end fittings is possible)

#### Two-part lashing strap

is a lashing device consisting of two woven textile straps, one with a tensioning element, and both with one end-fitting

#### Length $l_G$ – single-part lashing strap

measured from the end of the lashing strap up to the outer turn radius of its connection with the tensioning element

#### Length $l_{GF}$ – short end

measured from the bearing point of the terminal bracket up to the outer turn radius of its connection with the tensioning element

#### Length $l_{GL}$ – long end

measured from the end of the strap up to the bearing point of the terminal bracket piece

#### Minimum breaking force $BF_{min}$

the breaking force for which a lashing strap is designed

#### Lashing capacity LC

the highest force for use in straight traction for which a lashing strap is designed

#### Functional factor

the relation between fixed minimum breaking force  $BF_{min}$  and lashing capacity LC

2 – for tensioning element and terminal bracket

3 – for strap

#### Hand force HF

force on the grip of the tensioning element that produces traction in the lashing strap

#### Standard hand force SHF

prescribed hand force of 500 N = 50 daN specified on the label

#### Standard tension force STF

the remaining force after the grip of a ratchet has been let go at the prescribed hand force of 50 daN



the WIS label (example WTL 5550-006 SE 0.5 m)

## The WIS label

Reusable polyester lashing straps are furnished with one blue label for single-part lashing straps and with one label on each of the long ends and the short end for two-part lashing straps, which contain the following information:

### WIS label short end:

- > lashing capacity: LC value in daN
- > standard Hand Force: SHF 50 daN
- > standard Tension Force: STF value in daN
- > Warning: May not be used for lifting!
- > material specification: PES (for lashing straps with polyester webbing)
- > stretching of the lashing strap in % for LC value
- > name or symbol of the manufacturer
- > WIS tracking code
- > standard specification: EN 12195-2
- > year of manufacture

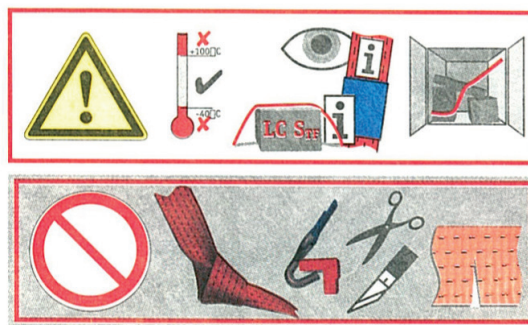
### WIS label long end:

- > lashing capacity: LC value in daN
- > Warning: May not be used for lifting!
- > material specification: PES (for lashing straps with polyester webbing)
- > stretching of the lashing strap in % for LC value
- > name or symbol of the manufacturer
- > WIS tracking code
- > standard specification: EN 12195-2
- > year of manufacture

## User information, additional label and User Manual

### Benutzerinformation

Es dürfen nur unbeschädigte Zurrgurte verwendet werden, deren Etikett lesbar ist. Unsachgemäße Ladungssicherung stellt eine Gefahr für das Leben von Personen, Tieren oder Gütern im Gefahrenbereich dar. Die praktischen Hinweise zur Benutzung und Pflege von Zurrgurten gemäß DIN EN 12195 - 2 Anhang B sind unbedingt einzuhalten.



front page

back page



## Handling of straps

Only lashing straps which are furnished with legible labels may be used. The label must prove that the strap complies with DIN EN12195-2. No mechanical aids such as rods or levers which do not belong to the tensioning element may be used.

Lashing straps may not be knotted. Lashing straps must be protected against friction and abrasion as well as against sharp edges (see edge protectors).

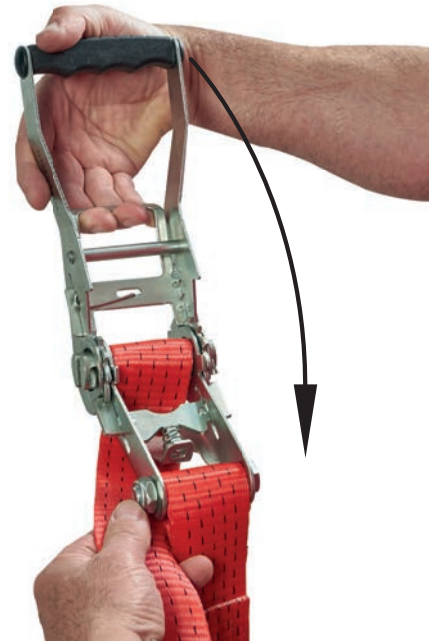
## Handling of ratchets

The strap end of the long end is threaded in the winding shaft of the ratchet. By actuating the ratchet lever, the belt strap is wound up and thus tensioned owing to the drive shaft rotation. The lashing strap must be wound at least 1.5 times around the winding shaft to ensure the belt strap fits tightly. However, no more than three strap layers may be wound to prevent the lock slider from becoming stuck. To release the belt strap, the function slider must be pulled and the ratchet lever must be swivelled by approximately 180 degrees towards the limit stop. The initial tension is thereby released with a jolt. Therefore, the load must be checked beforehand for possible danger.

### Correct handling of ratchets



1. After pulling the function slider, lift up the ratchet lever and then insert the strap.



2. Pull the function slider and turn down the ratchet lever by approximately 180 degrees to release.



## Checking lashing straps and load securing devices.

In terms of the VDI 2700 Guideline, all devices used for load securing must in principle be subjected to an annual test by a qualified and authorised person. As a supplementary measure in terms of DIN EN 12195-2, testing of lashing straps made of chemical fibres is recommended before and after every use. WISTRA recommends this for all load securing devices.

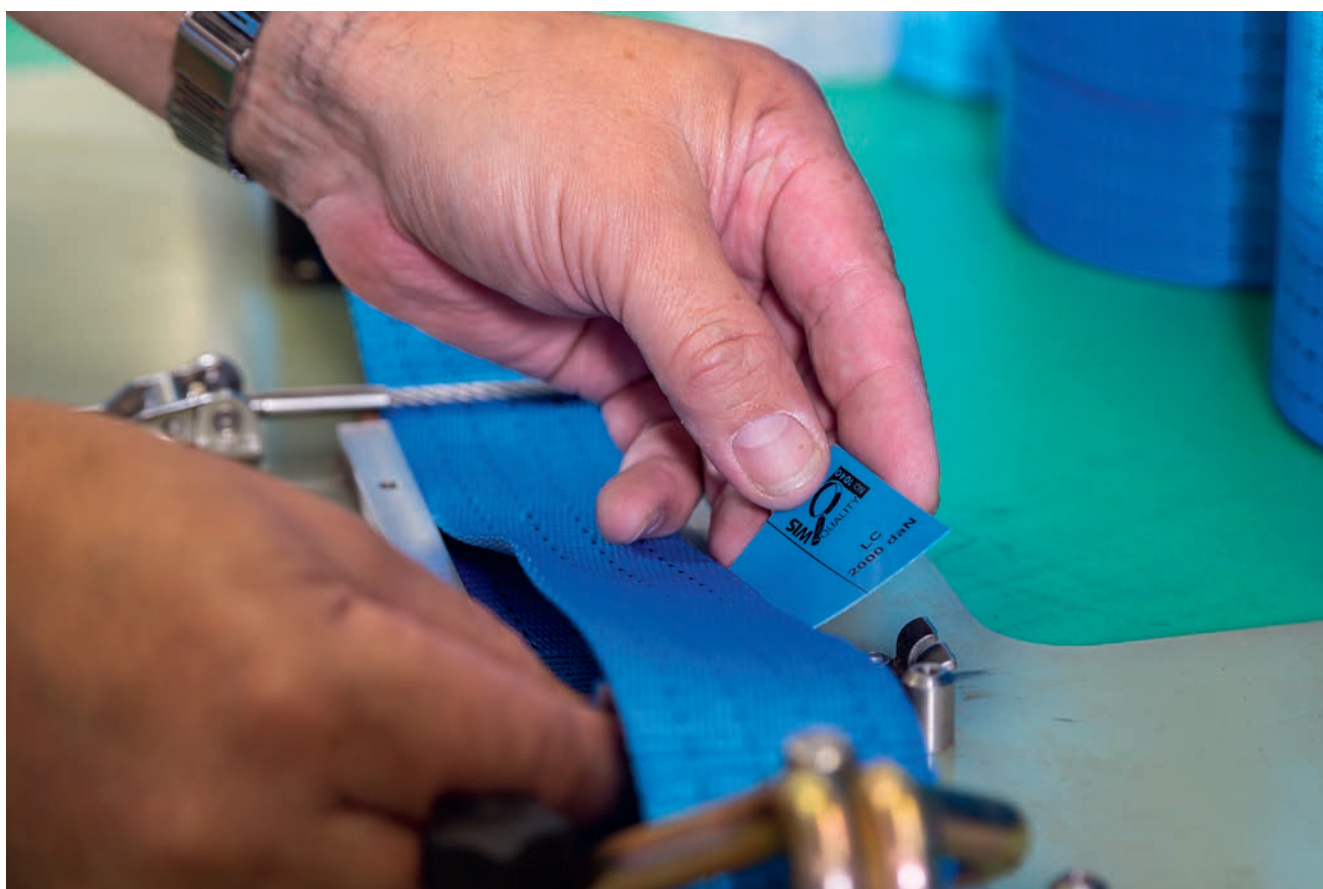
**Discard criteria** means that the lashing strap must be withdrawn from use once specified wear characteristics become visible.

Some discard criteria for lashing straps:

- Data on the lashing strap labels is illegible.
- cuts in the material wider than 10% of total width - e.g. for lashing straps with a width of 50 mm = approx. 5 mm
- damage through heat or chemical influences
- increased corrosion, cracks and/or other deformations on the connecting elements (hooks) as well as the tensioning element (ratchet)

*Note: Particularly the winding elements must undergo close inspection.*

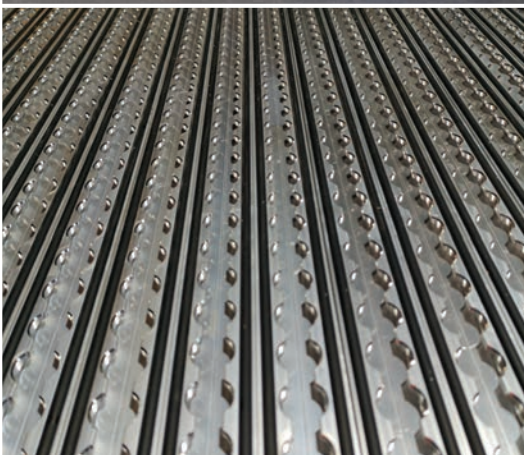
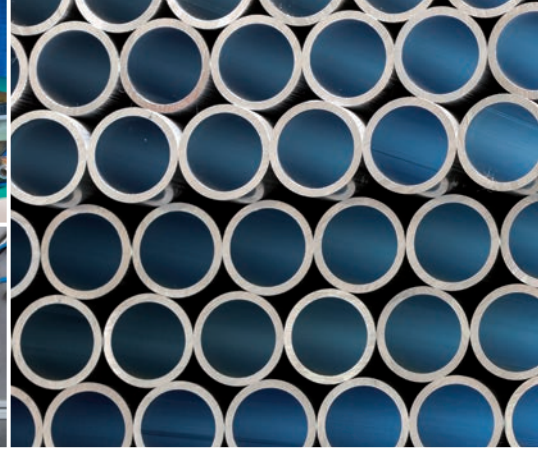
- The end-of-life of a lashing strap cannot be determined solely by its year of manufacture!















WORLD  CLASS

# CARGO

## SECUREMENT

KEEPING PEOPLE **SAFE**

FOR **50** YEARS



**WISTRA GmbH**  
Cargo Control  
An der Trave 11 • 23923 Selmsdorf  
Phone: +49 (0) 388 23 / 258-0  
Fax: +49 (0) 388 23 / 258-23  
E-mail: [info@wistra.eu](mailto:info@wistra.eu)

**UAB "Wistra Cargo Control"**  
Pramones 8  
LT-94102, Klaipeda  
Tel.: +370 61024943  
Tel.: +370 69565282  
E-mail: [masiule@wistra.eu](mailto:masiule@wistra.eu)

[www.wistra.eu](http://www.wistra.eu)



You can also visit us on Facebook:  
[www.facebook.com/wistra.eu](http://www.facebook.com/wistra.eu)